

# Matrox Monarch EDGE Device Setup

## Step 1 -- Connecting and Powering up the Monarch EDGE

The following illustration and the steps below describe a typical SDI-based connection scenario. The steps apply to both the Monarch EDGE Encoder and Decoder devices.

**Note** SFP28 connectors are shown for illustration purposes only. They are not included with your device.

1 Connect the 12V DC power supply to the Monarch EDGE.

2 Connect **LAN 1** to a DHCP-enabled network.

3 Connect SDI cables to the appropriate connectors. Use **SDI 4** for 12G video.

4 Power on the Monarch EDGE.

5 The LCD screen will display basic device information, such as the IP address and device serial number.

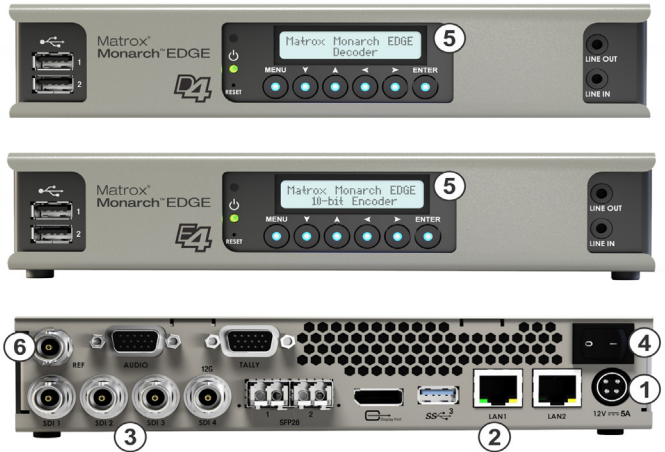
6 (Optional) The REF connector is for a genlock signal to synchronize SDI sources.

7 (Optional) You can set the Monarch EDGE to a static IP address from the LCD screen menu:

a Press **Menu > Device Config > Network Settings > LAN 1 > Static IP**.

b Use the arrow buttons to enter the static IP address (DNS server must also be entered in IP address format).

c Press **Enter** to finish.



Matrox Monarch EDGE is connected to the network and ready to be updated.

## Step 2 -- Discovering Monarch EDGE and Updating Firmware

After you have connected and powered up your Monarch EDGE, you may need to update the device firmware.

### Before you update

- Make sure you have at least 1 GB of free disk space available.
- Use only one instance of the firmware updater on your network at a time.
- Microsoft .NET Framework version 4.5.x is required. Windows 10 systems have version 4.6 pre-installed.
- Make sure you have a DHCP-enabled network, and that your server maintains the IP address of a device when it reappears on the network after a reboot. If not, assign static IP addresses to your devices.
- Make sure the Monarch EDGE Control Hub version on your computer matches the firmware version of the Monarch EDGE.

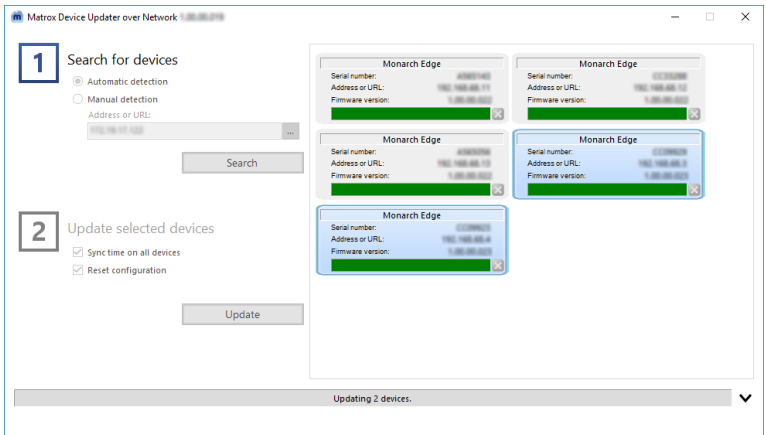
- If your system doesn't have access to a DNS server, use a fixed IP address (such as local host – 127.0.0.1) as its DNS server. Otherwise, the firmware update process may take a long time to complete.
- Stop all Monarch EDGE encoding processes and close all instances of Monarch EDGE Control Hub.

## Updating your Monarch EDGE firmware

- 1 Download the installation package from [matrox.com/video/downloads](http://matrox.com/video/downloads), then run *FirmwareUpdater.exe*.

The Firmware Updater opens.

- 2 Under **Search for devices**, run an **Automatic detection** for devices on the same subnet, or a **Manual detection** if you know the specific IP address of your device(s).
- 3 Click one or more of the Monarch EDGE devices to select them.
- 4 Under **Update selected devices**, you can synchronize the time between devices or reset the configuration settings before clicking **Update** to update the device firmware.



After all updates are complete, you are ready to install Matrox Monarch EDGE Control Hub.

---

## Step 3 -- Install and run Matrox Monarch EDGE Control Hub

After you have the firmware installed, install and run the Monarch EDGE Control Hub application to configure and control your EDGE devices. The Control Hub version you install must match the device's firmware version.

- 1 From your installation package, run *Matrox.MonarchEDGEControlHub.Setup.msi*.
- 2 Follow the on-screen instructions to install the software.
- 3 After the software is installed, run Monarch EDGE Control Hub from **Start > All Programs > Matrox Monarch EDGE Control Hub**.
- 4 Download the *Matrox Monarch EDGE Series Installation and User Guide* for more details on how to use Monarch EDGE Control Hub to configure and control your EDGE devices.

Your Monarch EDGE is ready to be used.

---

## Get the latest firmware and other information

Go to [www.matrox.com/video/downloads](http://www.matrox.com/video/downloads) for the latest firmware, documentation, and utilities.

---

Matrox is a registered trademark and Monarch is a trademark of Matrox Graphics Inc.

V11471-501-0200 Copyright © 2020 by Matrox Graphics Inc. All rights reserved. Printed in Canada.