

Matrox® Mura DVW

The background of the entire page is a blue-tinted aerial view of a complex highway interchange with multiple overpasses and ramps. A large, dark circular graphic with a yellow-to-cyan gradient border is centered on the page, containing the main text.

Seamless, scalable, synchronized video walls.

Matrox® Mura DVW is a high-performance, IP-based 4K distributed video wall appliance that lets you combine multiple units to easily create a fully synchronized video wall of any size and rectangular layout. Mura DVW integrates advanced computing, networking, video decoding, and graphics processing to deliver seamless visual experiences with maximum security. Mura DVW supports high-density, flexible decoding of H.265 (HEVC) and H.264 (AVC) video streams, as well as HTML5 web pages and dashboards. It is also fully TAA compliant.

Key features and benefits.

Perfect video synchronization

Drive up to 64 4K synchronized displays, or 256 full HD when combined with Matrox QuadHead2Go, from a range of sources and eliminate tearing by synchronizing DVW appliances together using IP-based PTP framelocking. With Mura DVW's built-in Best Master Clock Algorithm (BMCA), facility-wide synchronization across Mura DVW appliances can be achieved when a PTP Grandmaster is present.

High performance video wall

Each Mura DVW appliance supports high-density IP stream decoding—handling up to one 8K60, six 4K60, twelve 4K30, eighteen 1080p60, thirty-four 1080p30 or 720p60 and seventy-two 720p30 H.264/H.265 4:2:0 streams simultaneously. Output is supported across up to four 4K60 HDMI displays per device, ensuring smooth, ultra-high-resolution playback.

High quality desktop content

Leverage the HEVC 4:4:4 codec to deliver full-color depth for maximum image quality and system compatibility. This advanced compression enables low-bitrate transmission of visually rich content over IP—ideal for applications demanding color accuracy, compression efficiency, and high performance. Mura DVW also supports widely used codecs like H.264 and H.265 in 4:2:0 format, ensuring seamless integration with most modern COTS equipment.

Simple and serverless

Lower deployment costs by reducing additional hardware, dedicated server, and cabling requirements. Mura DVW further simplifies your video wall deployment by eliminating the need for a separate server and the additional complexity and cost of running a server.

Robust, built-in security

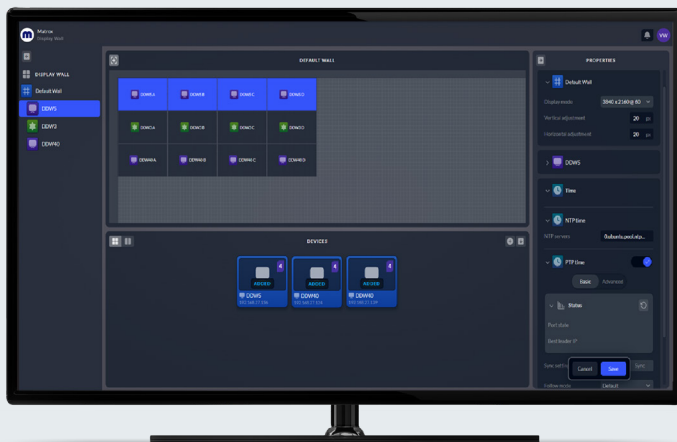
All communication is encrypted and uses secure protocols like HTTPS, authenticated RTSP, and SRT. User authentication is required for all access and control, while hardware-level encryption ensures no data can be extracted from the device. Powered by a custom-built, locked-down Matrox OS, the system minimizes attack surfaces by tightly controlling software components. Regular vulnerability scans and updates ensure resilience against evolving threats.

Control with confidence

Get up and running quickly using software you're familiar with. The Matrox Network API (NetAPI) simplifies development by providing you with a single development for both traditional Matrox-based video walls and the new distributed video walls. Quickly install and configure your video wall on any device from any location with the MuraConfig complimentary web-based installation and configuration application.

Long product lifecycle and dedicated support

Benefit from a product longevity of ten years and dedicated customer support. Your product carries a two-year warranty and has an available extended three-year warranty to ensure maximum protection.



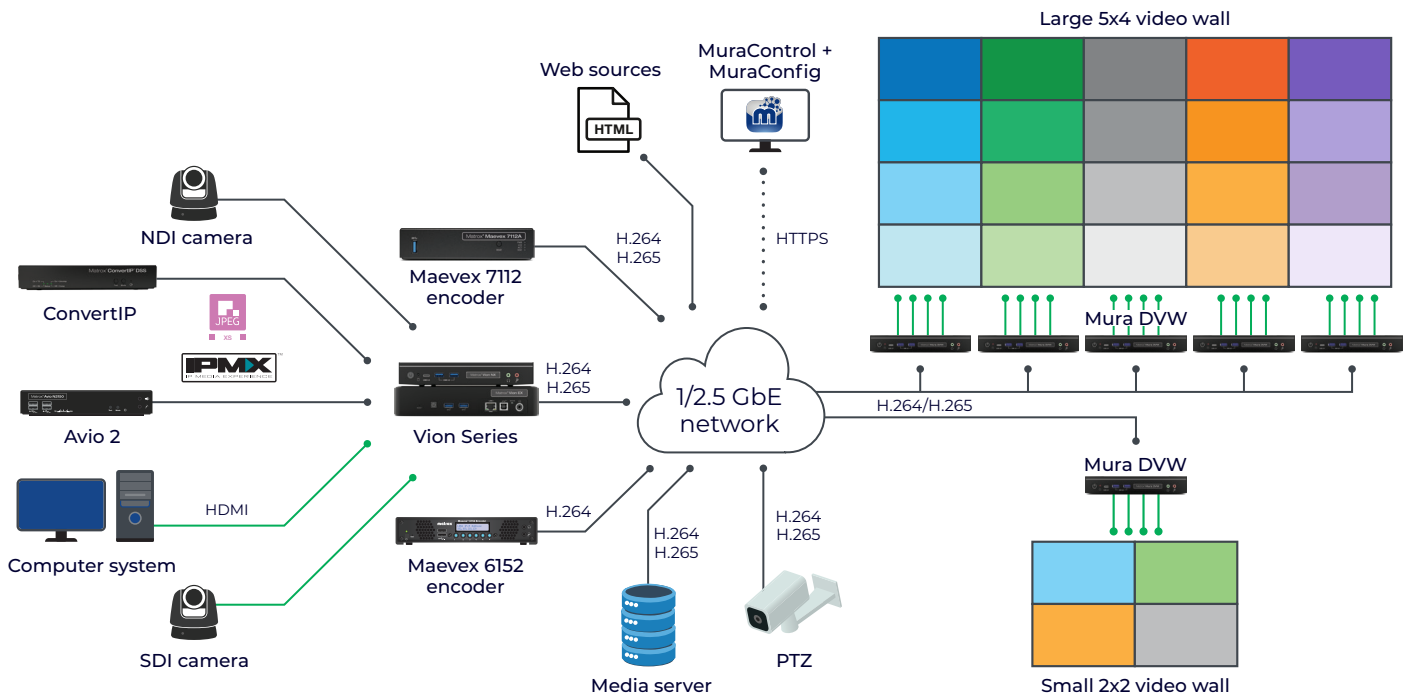
Matrox MuraConfig



Matrox MuraControl

Perfectly seamless, scalable video walls.

Display perfectly synchronized streams from a range of sources, including PTZ cameras, encoders, media servers, and web. Mura DVW video walls are flexible and scalable, enabling you to build fully distributed video walls of any size with performance that improves as you add more Mura DVW units to your setup.



Appliance overview



Matrox Mura DVW (front view)



Matrox Mura DVW (back view)

Matrox MuraConfig.

With the Matrox MuraConfig web-based installation and configuration tools, you can quickly install and configure your video wall on any device from any location. Use MuraConfig to:

- Automatically discover devices
- Set device-specific settings
- Configure your wall and bezels
- Check PTP status and configuration

Matrox MuraControl.

Matrox MuraControl provides an intuitive, browser-based interface that makes it easy to create, manage, and operate video wall layouts. Users can take full control of their video wall with features such as:

- Effortless AV stream management with drag-and-drop window control
- Flexible layout design to arrange, resize, and reorder content windows on the canvas
- Custom text overlays to label or annotate any window with relevant information
- Integrated system control to streamline deployment and simplify daily operations
- Centralized access from a familiar, browser-based environment—no software installation required environment

Technical specifications

Product	Mura DVW
Part number	<ul style="list-style-type: none">• DVW-Q4KY-NA (Canada/US power cord)• DVW-Q4KY-EU (European Union power cord)• DVW-Q4KY-UA (UK and Au/Nz power cord)
Cooling	<ul style="list-style-type: none">• Dual ball bearing fan
Connectors	<ul style="list-style-type: none">• 4x HDMI outputs with locking mechanism• 2.5 and 1GbE¹ RJ45 ethernet
Maximum output resolutions	<ul style="list-style-type: none">• Max. 4096x2160@60Hz
Form factor	<ul style="list-style-type: none">• Standalone appliance,• 1U, ½ rack (horizontal)
Network interface	
Standard	<ul style="list-style-type: none">• Ethernet 10/100/1000/2.5G base-T, auto-detect, half/full-duplex
Connector	<ul style="list-style-type: none">• RJ45
IP version	<ul style="list-style-type: none">• IPv4/IPv6
Distributed method	<ul style="list-style-type: none">• Unicast, multicast and multiple unicast
IP addressing	<ul style="list-style-type: none">• DHCP (default) and Static IP
Streaming & control protocols	
Streaming protocols	<ul style="list-style-type: none">• RTSP, SRT, MPEG2-TS
Command & control protocols	<ul style="list-style-type: none">• Telnet and HTTPS
Color space	
Pixel formats	<ul style="list-style-type: none">• RGB: 8:8:8, 10:10:10¹ (24/32 bits per pixel)• YUV: 4:4:4, 4:2:0 (8/10¹ bits per component), color space conversion support
Video & audio processing	
Video compositing	<ul style="list-style-type: none">• Multi-channel video composite/key/blend/crop/mirror/flip
Audio	<ul style="list-style-type: none">• Future software feature
Video decoding	
Codec engine	<ul style="list-style-type: none">• H.264/MPEG-4 Part 10 (AVC), up to level 5.2, 4:2:0 8-bit• H.265 (HEVC), up to level 6.2, 4:2:0 and 4:4:4 8-bit
H.264 and H.265 decode	<ul style="list-style-type: none">• For both H.264 and H.265, 4:2:0 8-bit, displayed across four 4K60 monitors: 1x 8K60, 6x 4K60, 12x 4K30, 18x 1080p60, 34x 1080p30, 72x 720p60
Rate control	<ul style="list-style-type: none">• Constant bitrate (CBR), variable bitrate (VBR), VBR with constraints, configurable GOP (group of pictures) structure
Environmental & power conditions	
Operating conditions	<ul style="list-style-type: none">• Temperature: 0 to 40³ degrees Celsius• Humidity: 10% to 90% non-condensing
Storage conditions	<ul style="list-style-type: none">• Temperature: -20 to 70 degrees Celsius• Humidity: 20% to 80% non-condensing
Typical power consumption	<ul style="list-style-type: none">• 45W (12-19V)
Power supply	<ul style="list-style-type: none">• 19V, 90 Watt PSU with locking mechanism
General specifications	
Dimensions	<ul style="list-style-type: none">• L: 19cm (7.48in) x W: 14.8cm (5.83in) x H: 3cm (1.18in)
Rackmount	<ul style="list-style-type: none">• VESA mount bracket included, rackmount compatible
Regulatory compliance	<ul style="list-style-type: none">• Class A: FCC, CE, RCM, ICES-003, KC, UKCA
Environment compliance	<ul style="list-style-type: none">• RoHS, China RoHS, REACH, WEEE
Warranty	<ul style="list-style-type: none">• 2 years²

1. Coming soon.

2. Extended warranty available.

3. Units mounted side-by-side in a rack require proper ventilation and a maximum ambient temperature of 30°C for optimal performance.



Contact Matrox Video

Montreal Headquarters: 1-800-361-4903 (North America), 514-822-6364 (Worldwide) | video@matrox.com

London Office: +44 (1895) 827300, Munich Office: +49 89 62170-444