

Matrox® Maevex™ 5100 Series Configuring Wowza Streaming Engine™ With The Maevex Encoder

Reference document

Rev 1.00

January 29, 2016

Authors: Ron Berty and Robert Rossi

Overview

The following document provides step-by-step instructions on how to configure Wowza server with the MaeveX Encoder as a source input to the Wowza streaming server and to play back the stream using the MaeveX decoder or a software player.

Note: This document assumes you're using version 1.04 or higher of Matrox PowerStream software and firmware and Wowza Streaming Engine 4.3 or higher. You should also be generally familiar with the PowerStream and Wowza Streaming Engine applications.

More Information

The following documentation and MaeveX software Help feature provides additional documentation such as installation, connection setup, the hardware information, and general software features and configuration details for the Matrox MaeveX hardware and software discussed in this document.

- [Matrox MaeveX 5100 Series User Guide](#) – provides information on installing and connecting your MaeveX 5100 Series products.
- **Matrox PowerStream Help** – located in the MaeveX PowerStream software. It provides information on PowerStream software features and options.
- [Matrox MaeveX I/O Guide](#) – provides information on how to determine which display modes are used from the source device to monitors connected to your encoder and decoder units.

Accessing Matrox PowerStream

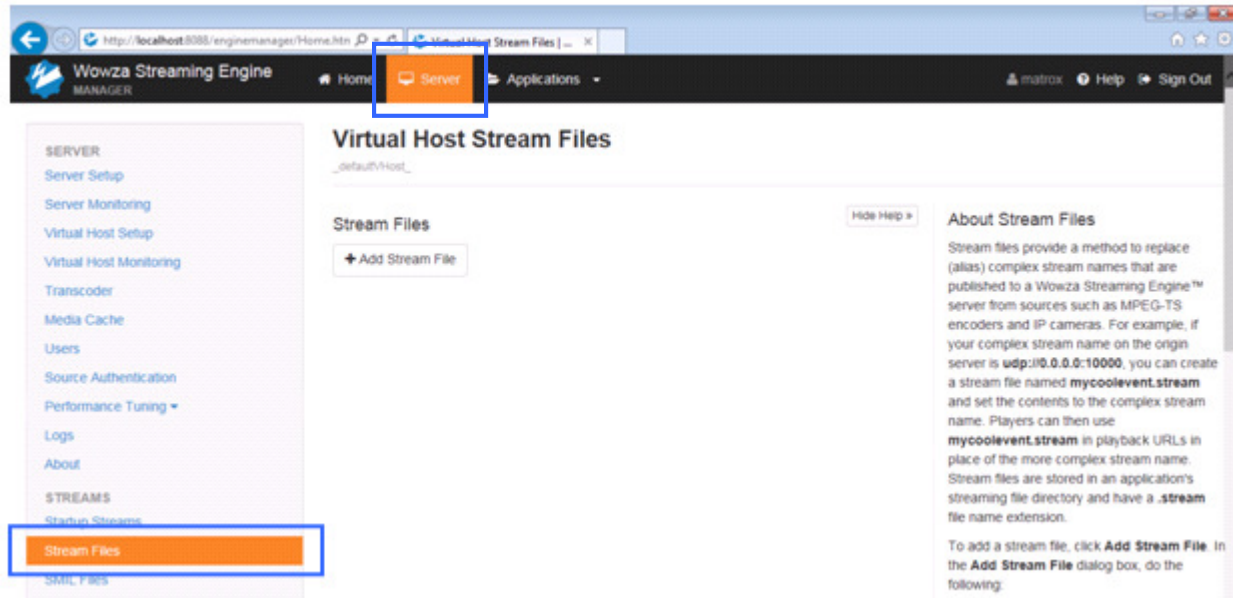
- **Windows 10** – Click Start ->All apps->Matrox PowerStream->Matrox PowerStream
- **Windows 8.1** – From the Start screen, click Matrox PowerStream
- **Windows 7** – Click Start-> All Programs (or Programs)-> Matrox PowerStream-> Matrox PowerStream

Functional Steps for enabling Wowza Streaming Engine with MaeveX

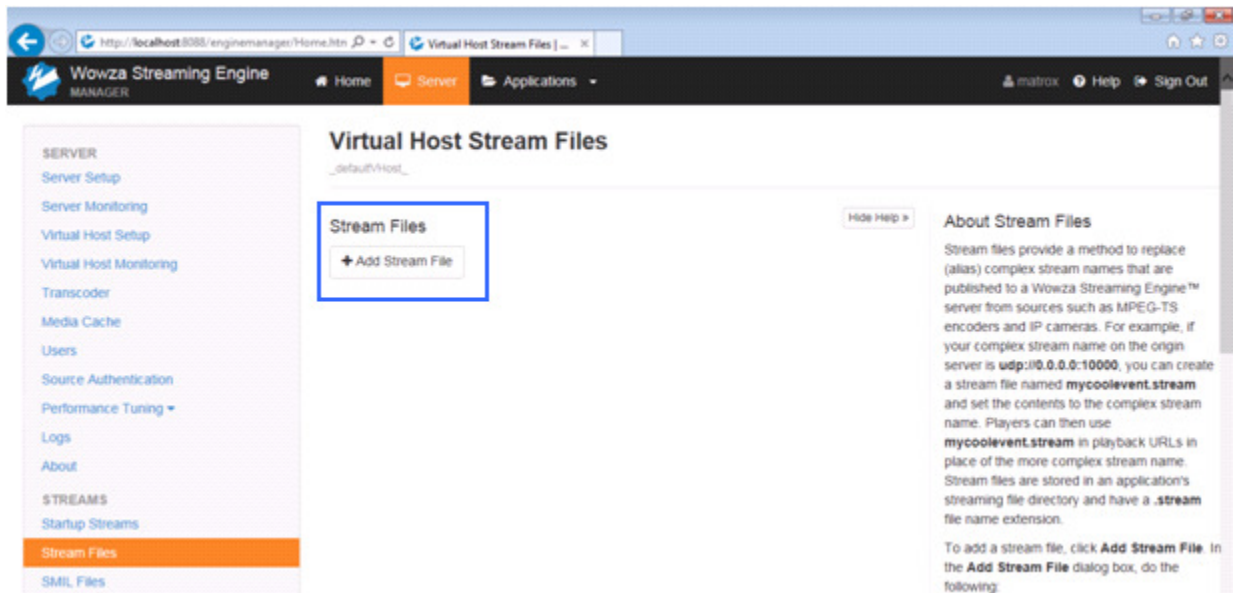
1. [Configure the MaeveX Host Stream file within Wowza](#)
2. [Activate the stream](#)
3. [View and verify the test stream](#)
4. [Setup MaeveX decoders to view the Wowza stream.](#)
5. [Conclusion](#)

1. Configure the Maeve Host Stream file within Wowza

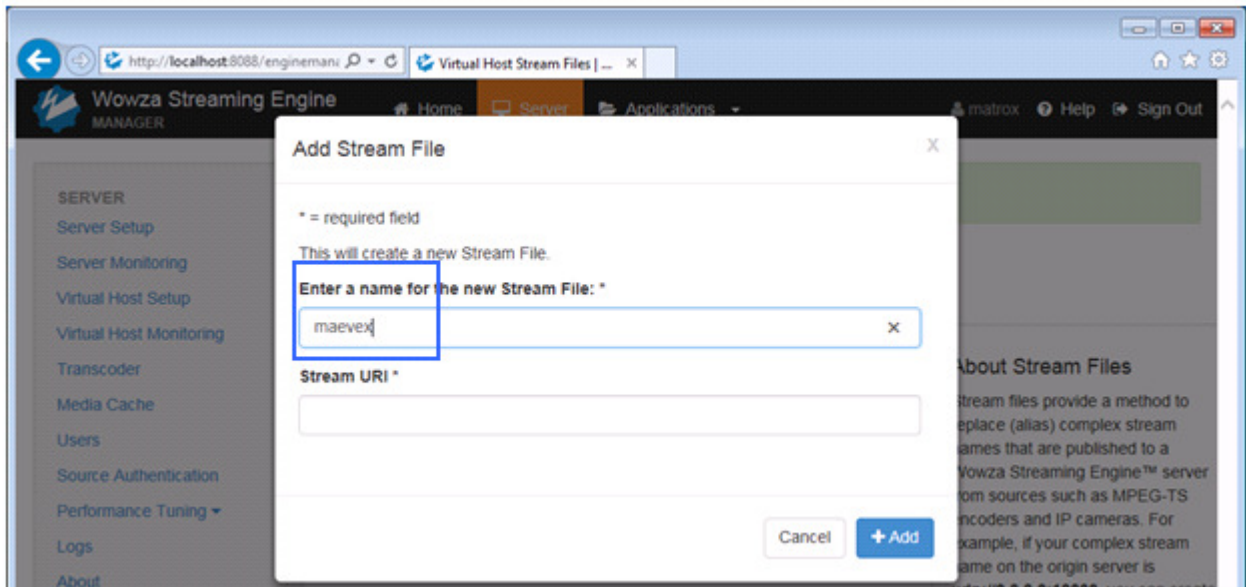
1a. You will need to configure the Wowza Streaming Engine to accept an input from the Maeve Encoder. To do this, once you login to the Wowza Streaming Engine, you will click on “Server”. Next, click on the “Stream Files” option.



1b. You will now need to configure the Maeve host stream file by clicking on the “Add Stream File”.

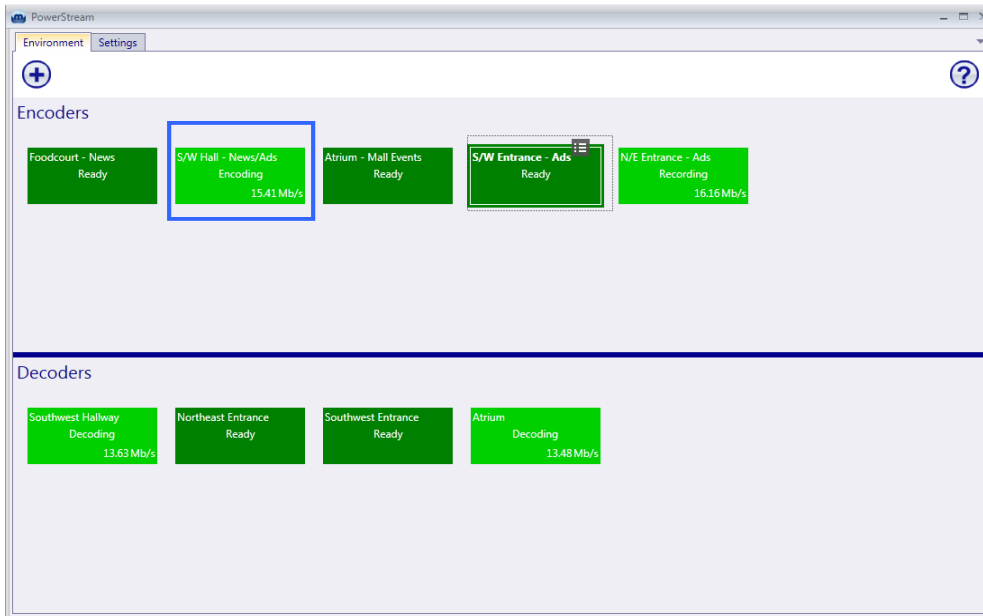


1c. The “Add Stream File” window will appear and you need to enter a name in the “Enter a name for the new Stream File:”



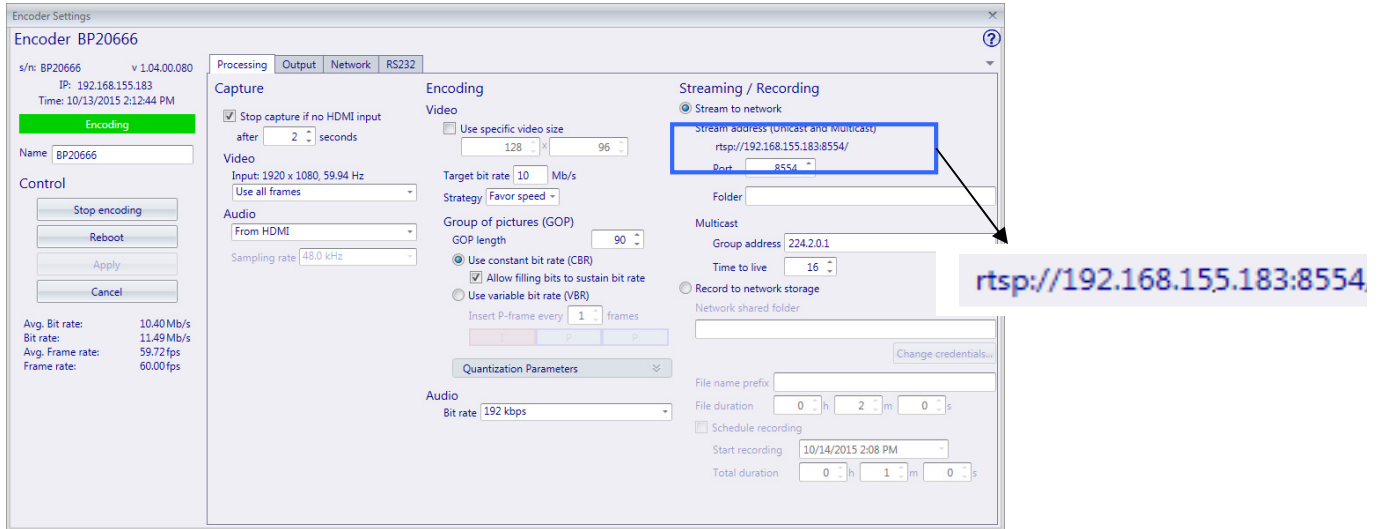
1d. You will be required to enter the streaming address in the “Stream URI”. The streaming address can be obtained from the Maevox PowerStream software as illustrated below.

- i. Start the Maevox PowerStream software and select the encoder for the source.

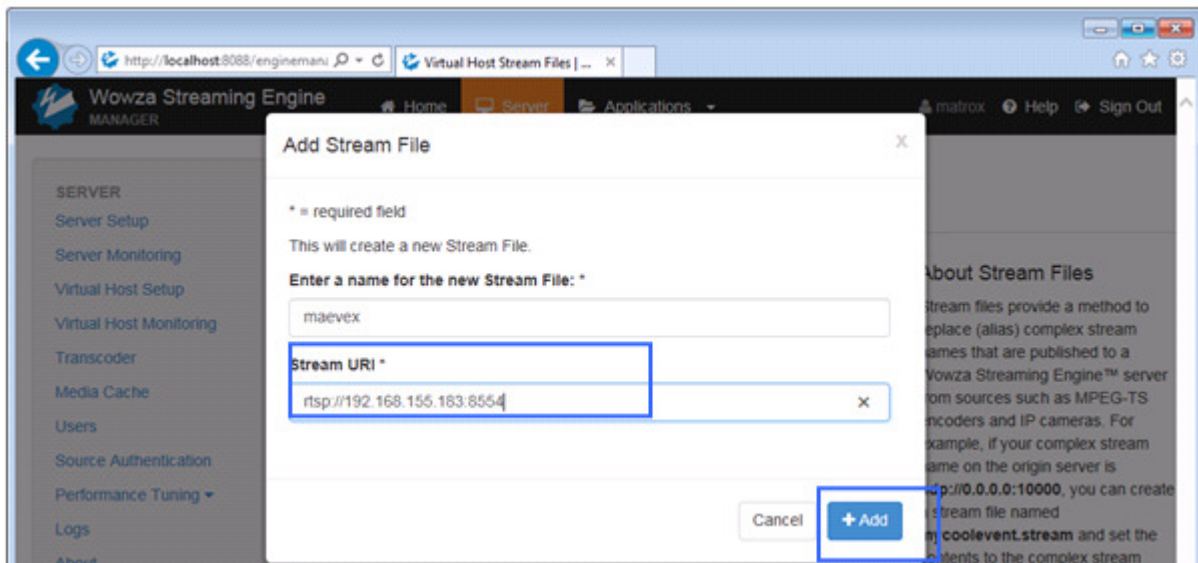


Matrox® Maeve™ 5100 Series - How to Configure Wowza Streaming Engine™

ii. From the encoder settings page, copy the stream address as illustrated below;

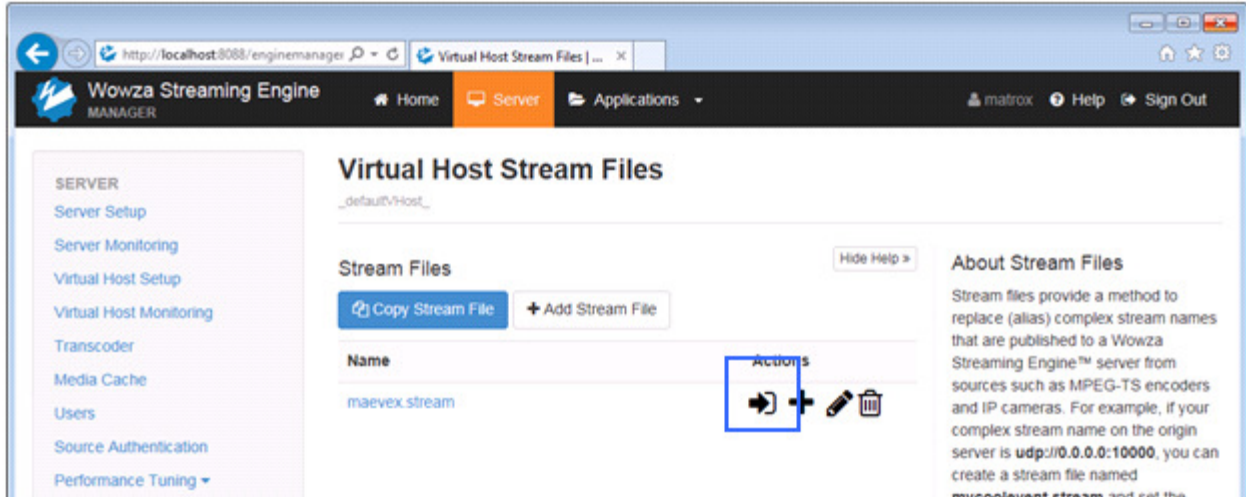


1e. You will need to add the stream address from step 1d-ii above to the “Stream URI” entry. Once completed click on the “+Add” button.

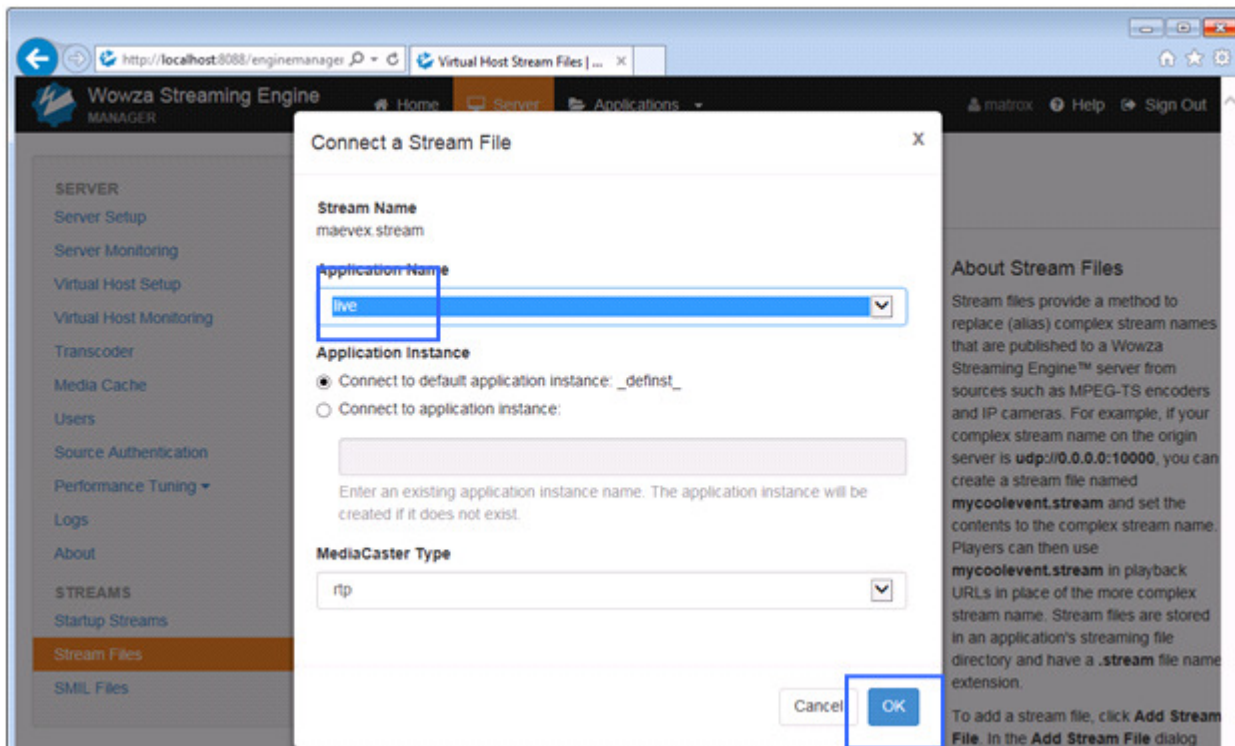


2. Activate the stream

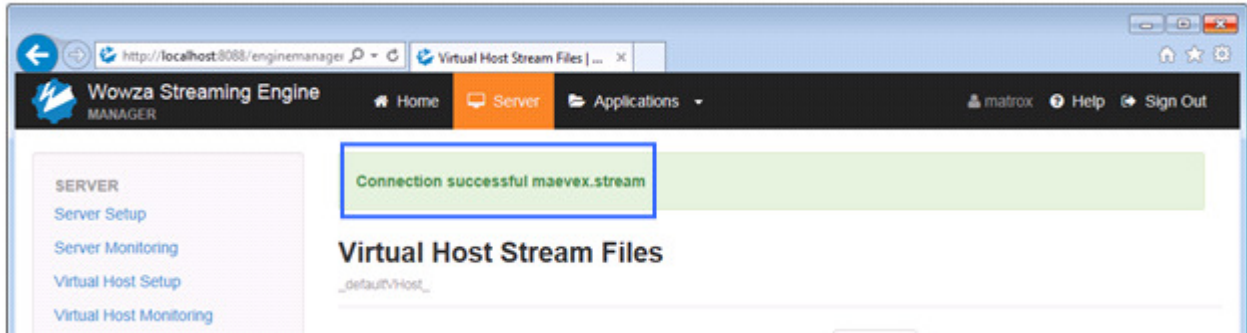
2a. You will now need to activate the stream. Click on the “arrow” from the illustration below (this should be the screen on the interface after the last step);



2b. The following window will appear. For the “Application Name”, select “live” from the dropdown menu. For the rest of the options leave the default values. Click on “OK”.

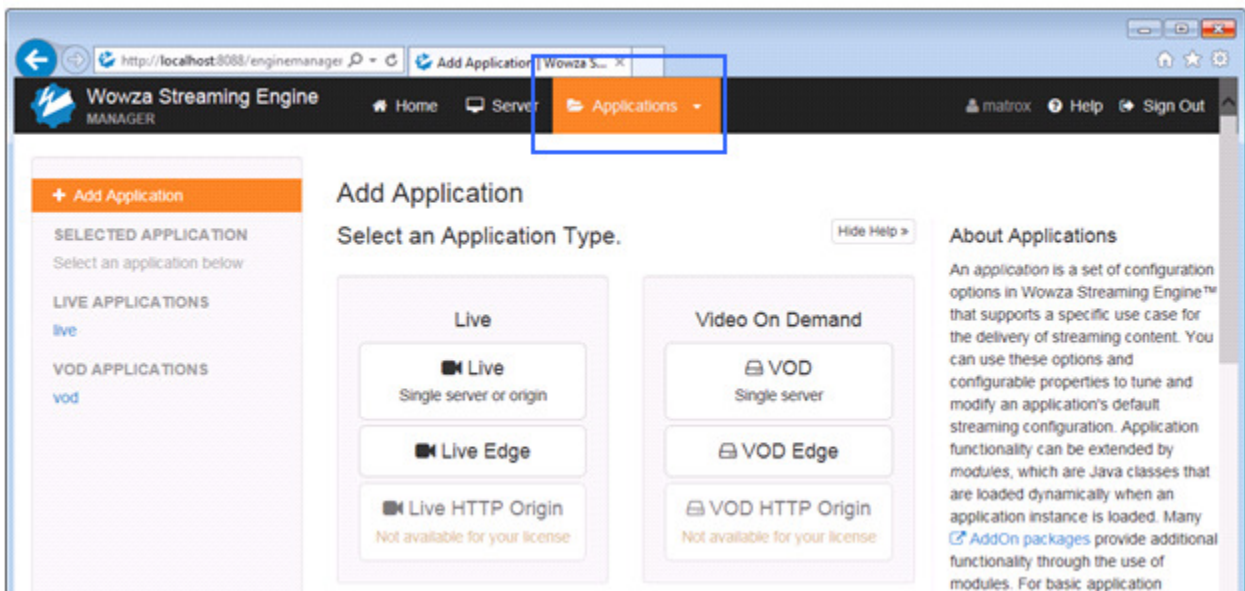


2c. The highlighted annotation will appear in the Wowza Streaming Engine UI. If the configuration is done correctly you will see the “Connection successful Maevev.stream” message.

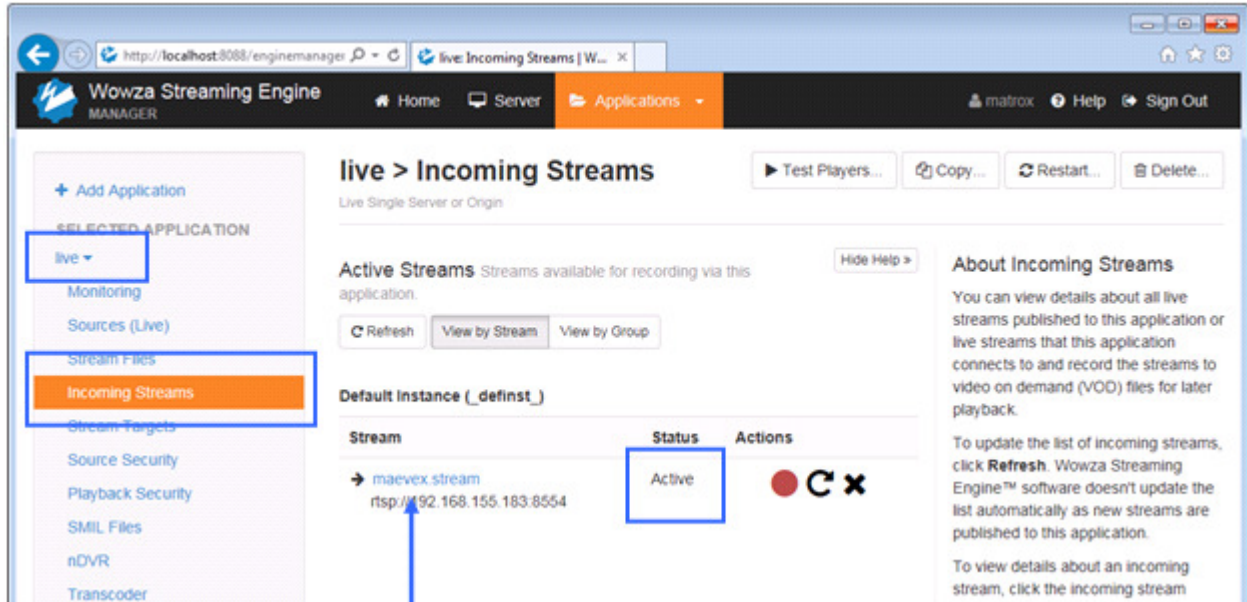


3. View and verify the test stream

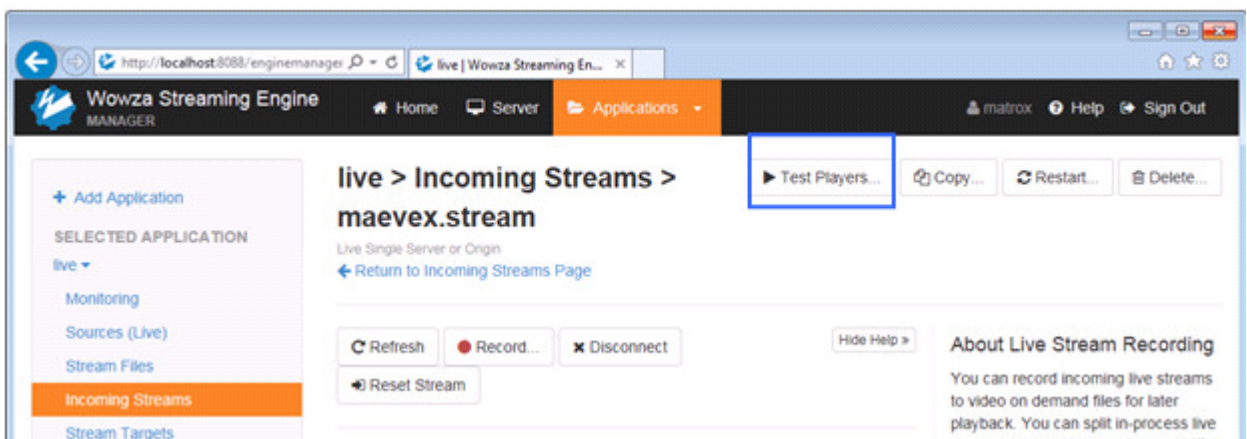
3a. Once steps 1 to 3 are completed, you are now able to view the stream in the Wowza Streaming Engine UI. To be able to see and access the stream, click on “Application” as illustrated below;



3b. Then on the left side of the UI, click on the “Live” option and then click on “Incoming Streams”. You will notice that the stream “status” is “Active” which indicates that the Wowza Streaming Engine is receiving the stream from the Maeve encoder. At this point, click on “Maeve.stream” (see blue arrow).

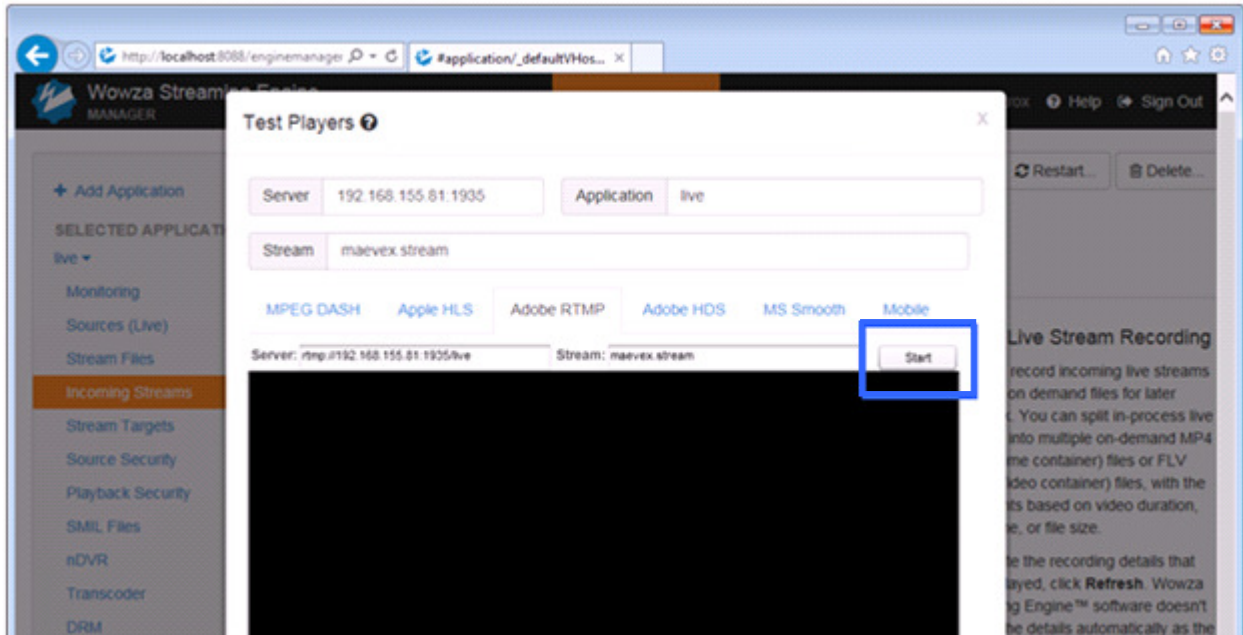


3c. Once you have clicked on the “maevex.stream” from step 3b the following will appear. You can now test the stream by clicking on “Test Players” as illustrated below;

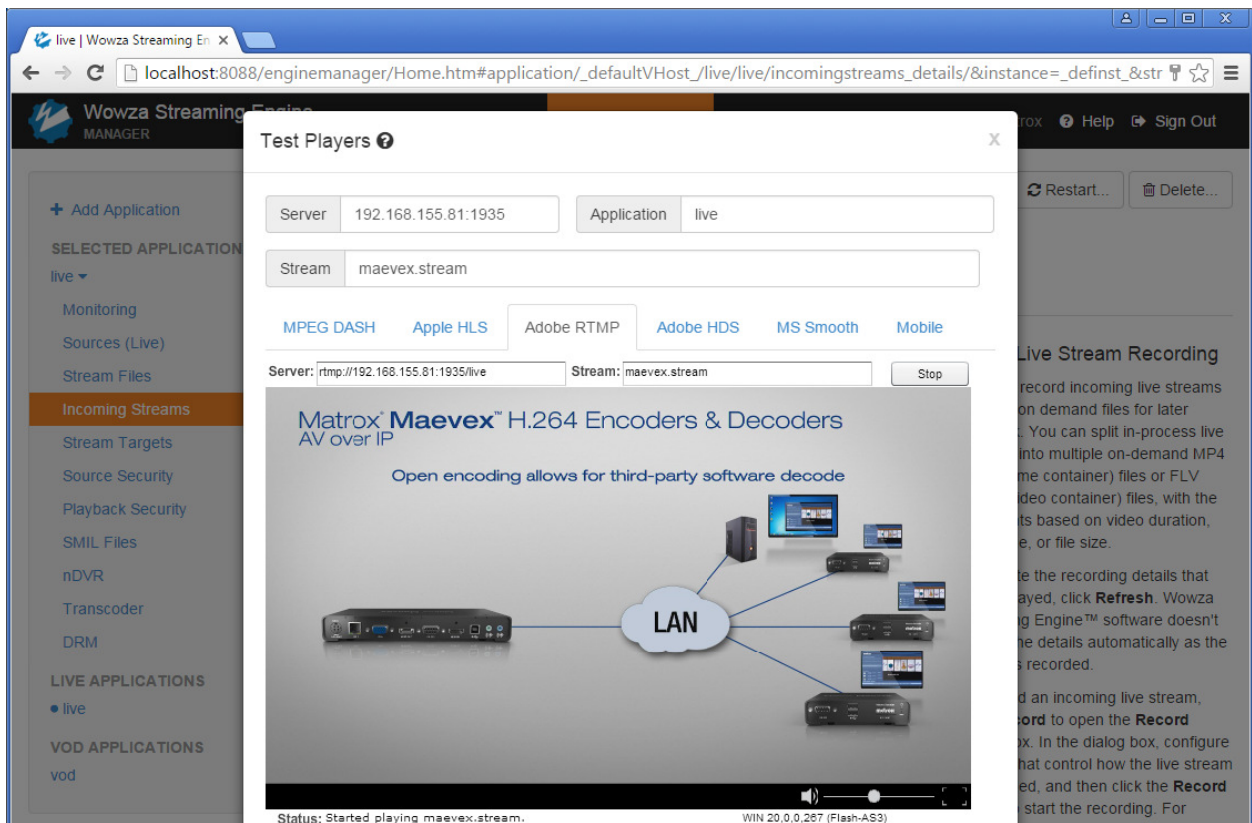


Matrox® Maeve™ 5100 Series - How to Configure Wowza Streaming Engine™

3d. The default test player, Adobe RTMP window will appear. Click on the “Start” button as illustrated below;

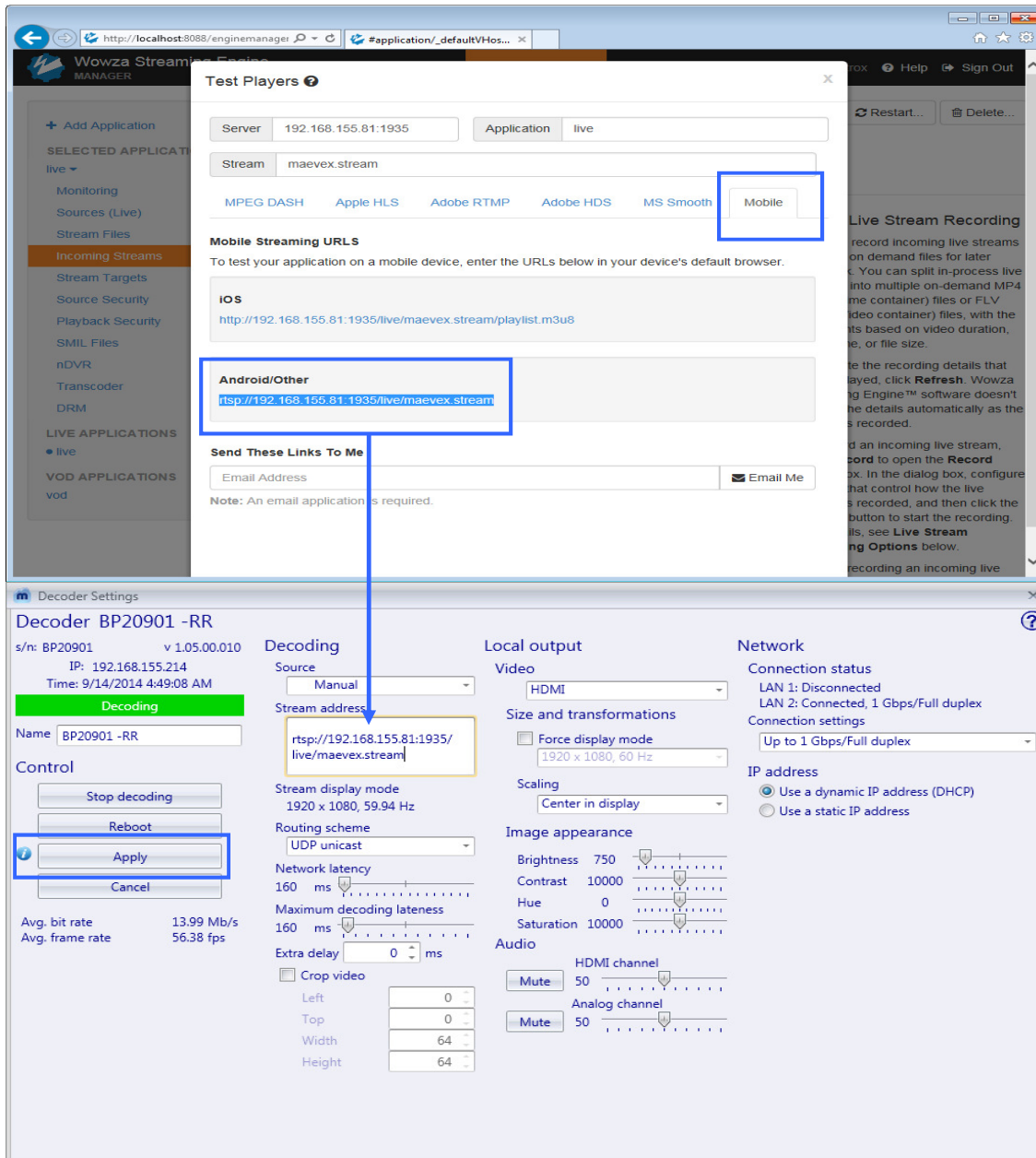


The video from Maevev encoder will now be playing.



4. Setup Maevox decoders to view the Wowza stream.

Now, you can play back the video using the Maevox decoder. In order to accomplish this click on the “Mobile” option and copy the URL from the “Android/Other” section to the “Stream Address” entry of the Maevox decoder settings page from the Maevox PowerStream and then click on “apply” as illustrated below;



Alternatively, the above procedure can be applied to software players that support RTSP streaming.

5. Conclusion

With the help of this document, you should now be able to setup the Wowza Streaming Engine with the Matrox Maeve encoder. The Wowza Streaming Engine will deliver the Maeve streaming content to third party applications and also to the Maeve decoder.

If there are any issues, please contact Matrox tech support at www.matrox.com/graphics/support.

Thank you for using the Matrox Maeve and the Wowza Streaming Engine.

Special thanks to Wowza for their help and support in putting together this document.

Disclaimer

Information in this document may contain technical inaccuracies or typographical errors. Information may be changed or updated without notice. Matrox reserves the right to make improvements and/or changes in the products, programs and/or specifications described in this information at any time without notice. All trademarks and trade names, service marks and logos referenced herein belong to their respective owners.

Copyright © 2016 Matrox Graphics Inc. All rights reserved. Matrox and Matrox product names are registered trademarks and/or trademarks of Matrox Electronics Systems Ltd. and/or Matrox Graphics Inc. in Canada and other countries. All other company and product names are registered trademarks and/or trademarks of their respective owners.