

# VIDEO WALL MANAGEMENT SOFTWARE



Matrox® **MuraControl™**  
Take Control of Your Video Wall

# Matrox MuraControl™ Software to Manage Your Video Wall

Control Locally or Remotely. On Windows.

Matrox MuraControl™ is a low-cost, premium performance, video wall management software that provides an easy and intuitive way to manage your Matrox-based video wall, multiviewer, or personal video wall locally or remotely. Available as a feature-rich, single-license software for Microsoft® Windows®, MuraControl can be used to create and manage layouts offline or in real time.

### Key Features

- Easily manage inbound and outbound AV streams
- Create, save, rename, copy, export, import, and delete layouts/presets
- Window transparency and color-keying functions
- Robust upgrade and software-support program
- Position, scale, clone, crop, frame, and label input windows
- Apply color-correction, multi-lingual text overlay, and deinterlacing

### MuraControl for Windows

Getting Started	Free 21-day trial software available from Matrox Video website (USB software license available for purchase)
Supported OS	Microsoft Windows 10 and 11, and Server 2019 and 2022
Supported Hardware Configurations	<ul style="list-style-type: none"> <li>• Up to 4x LUMA cards OR</li> <li>• Up to 4x D-Series cards OR</li> <li>• Multiple Mura IPX Capture cards paired with up to 4x LUMA cards OR</li> <li>• Multiple Mura IPX Capture cards paired with up to 4x D-Series cards OR</li> <li>• Multiple Mura IPX Capture cards paired with 3rd part graphics<sup>1</sup></li> </ul>

### Customized Video Wall Software

The MuraControl white-label skinning solution allows OEMs and system integrators to tailor the graphical user interface, while the MuraControl Tablet SDK allows users to expand complete package product offerings and customize software for both Windows desktop and tablet-based video wall control systems.

#### MuraControl White-Label Solution for OEMs/Integrators

- A turnkey, fully rebranded version of our powerful MuraControl for Windows video wall software.
- Control of elements such as logos, buttons, product name, and color schemes.
- Matrox Video comes with over 45 years of robust client support programs.

#### Paired with Matrox LUMA Series



#### Advantages:

- Up to 8 synchronized 8k60 or 16 5k60 outputs
- Available in both standard height and low profile for integration in different environments
- Microsoft DirectX® 12, OpenGL®, OpenCL™, Vulkan®, Intel® oneAPI and OpenVINO™
- Windows 10 and 11

#### Paired with Matrox D-Series



#### Advantages:

- Up to 16 synchronized 4096x2160 @ 60Hz outputs
- Available with HDMI or DisplayPort 1.4 outputs for seamless integration with multiple environments
- Over-the-top framelock cable means no additional cards are required for synchronization
- HDCP support
- Microsoft DirectX 12, OpenGL 4.5 and OpenCL 1.2 support enables latest professional applications
- Windows 10 and 11

#### Paired with 3rd party Graphics<sup>1</sup>



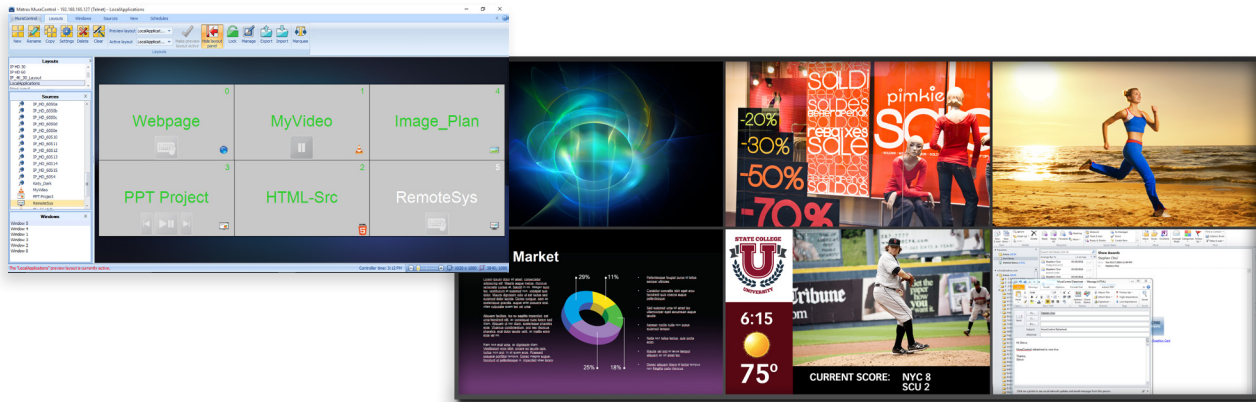
#### Advantages:

- High-resolution monitor support
- Low-cost integrated or generic professional graphics options
- Multiple available models for various graphical performance requirements
- Microsoft DirectX, OpenGL and OpenCL support enables latest professional applications
- Windows 10 and 11

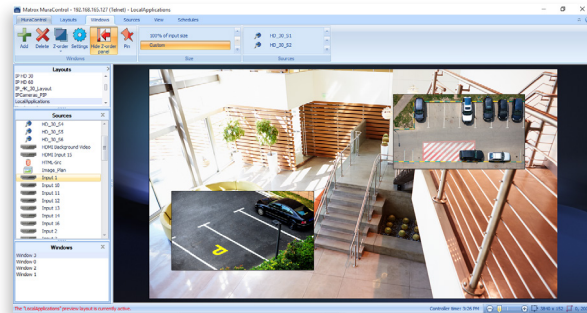
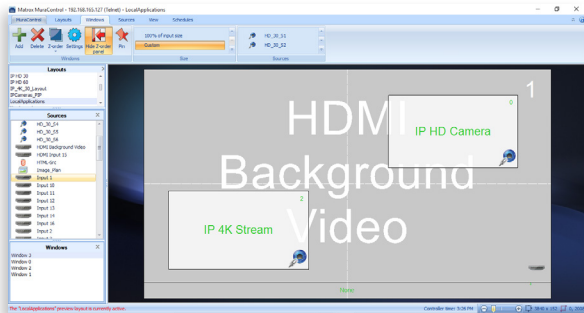
<sup>1</sup>. See release notes for details on which brands, models and configurations are supported.

# Easy-to-Use Video Wall Management Software

Discover how to start creating, previewing, and applying layouts in MuraControl so that your video wall appears exactly as you envision. Create and save unique presets by arranging local application, direct, and IP source content exactly where you want it, by managing and modifying a variety of in-depth window properties.



Create layouts and open, position, and control local applications and images such as Internet Explorer, VLC, pictures, PowerPoint Viewer, HTML5 and VNC.



Build layouts featuring HDMI, DisplayPort, IP, and other types of sources, for placement anywhere on the wall, including a Picture-in-Picture (PIP) format.

# Technical specifications

## MuraControl for Windows

Specifications	
Part Number	MURA-CTRLWF
Supported OS	Windows 10 and 11, and Server 2019 and 2022
Supported Video Wall Platforms	LUMA Series, LUMA Series + IPX Capture Cards, D-Series, D-Series + IPX Capture Cards, 3rd party graphics + Mura IPX Capture Cards
Layout Management	Create, Save, Preview, Apply, Lock, Copy, Import, Export, and Delete
Layout Scheduling	Yes
Image and Text Overlay	Create, Edit, Delete, Apply Multi-Lingual Unicode Text Overlay and Marquee Text, and Image overlay, including control over font, colour, size, location, and speed.
Window Management	Create, Position, Rotate (any arbitrary angle), and Resize Windows anywhere on the wall, including control of advanced window border colour and width
Window Cropping	Advanced
Z-Order Management	Advanced: Ability to set z-order value of each window
Source Management	Create, Rename, Crop, Rotate, and Text Overlay functionality
Create Source	Yes (Hardware Inputs, IP, HTML5, VLC, PowerPoint Viewer, VNC, Image and Internet Explorer)*
Audio Management	Yes (only one audio channel can be played out at any given point of time.)
Source Settings**	Edit Source-specific Alpha Blending, Colour Keying, Hue, Saturation, Brightness, and Contrast
Source Touring	Yes
De-interlacing Filters	Apply Source-specific filters, including Bob, Weave, single-field, and adaptive technique
Preview Surface	Yes
Application Control	VLC (Volume + Play/Pause), IE (Mouse and Keyboard), VNC (Mouse and Keyboard), and PPT (Previous/Next Slide and Play/Pause Slide switching)
Video Wall Detection	IP Address and UPnP for automatic detection
Video Wall Startup Control	Ability to Stop/Start Control and Show/Hide (with Static Background) Desktop
Video Wall Communication Port	Telnet (Port 23) and/or HTTPS (Port 46272)
Video Wall Access	Local and/or Remote over LAN
Availability	Free 21-day trial available on the Matrox Video website. USB software license available for purchase.

\* Other applications may be opened and controlled through within your layout. Please contact Matrox Video for more details.

\*\* Only applies to physical, IP, HTML5 and VLC sources

### Contact Matrox Video

**Montreal Headquarters:** 1-800-361-4903 (North America), 514-822-6364 (Worldwide) | [video@matrox.com](mailto:video@matrox.com)

**London Office:** +44 (1895) 827300

**Munich Office:** +49 89 62170-444

