

Matrox MicroQuad

User Guide

July 7, 2014

matrox[®]
Digital Video Solutions

Y11204-301-0120

Trademarks

Matrox Electronic Systems Ltd.	Matrox [®] , MicroQuad [™]
Apple Inc.	Apple [®] , Mac [®] , Mac OS [®]
HDMI Licensing LLC.	HDMI [™]
Microsoft Corporation	Microsoft [®] , Windows [®]
USB Implementers Forum, Inc.	USB [®]

HDMI, the HDMI logo and High-Definition Multimedia Interface are trademarks or registered trademarks of HDMI Licensing LLC. All other nationally and internationally recognized trademarks and tradenames are hereby acknowledged.

Copyright © 2014 Matrox Electronic Systems Ltd. • All rights reserved.

Disclaimer Matrox Electronic Systems Ltd. reserves the right to make changes in specifications at any time and without notice. The information provided by this document is believed to be accurate and reliable. However, no responsibility is assumed by Matrox Electronic Systems Ltd. for its use; nor for any infringements of patents or other rights of third parties resulting from its use. No license is granted under any patents or patent rights of Matrox Electronic Systems Ltd.

Unauthorized recording or use of broadcast television programming, video tape, or other copyrighted material may violate copyright laws. Matrox Electronic Systems Ltd. assumes no responsibility for the illegal duplication, use, or other acts that infringe on the rights of copyright owners.

Matrox Electronic Systems Ltd.

1055 St. Regis Blvd., Dorval, Quebec, Canada H9P 2T4

Tel: (514) 685-2630 Fax: (514) 685-2853 World Wide Web: www.matrox.com

Matrox License Agreement, Warranty, and Service

A. Matrox software/firmware license agreement

By using the Matrox MicroQuad software/firmware, the original purchaser ("You" or "Licensee"), indicate your acceptance of these terms. If You do not agree to the terms of this agreement, please return your Matrox product to your Matrox representative.

This Matrox MicroQuad software/firmware, any included sample images, other files and documentation ("Program"), is copyrighted by Matrox Electronic Systems Ltd. All rights are reserved. You are granted a license to use the Program only, subject to the following restrictions and limitations:

- 1 The license is to You the original purchaser only, and is not transferable without written permission of Matrox.
- 2 You must use the Program on a single computer owned or leased by You at a time in conjunction for the purpose of operating the Matrox MicroQuad hardware.
- 3 You may make back-up copies of the Program for your own use only, subject to the use limitations of this license.
- 4 You may not engage in, nor permit third parties to engage in, any of the following:
 - a Providing or disclosing the Program to third parties.
 - b Providing use of the Program in a computer service business, network, time-sharing, multiple CPU, or multi user arrangement to users who are not individually licensed by Matrox.
 - c Making alterations or copies of any kind in the Program (except as specifically permitted above).
 - d Attempting to disassemble, decompile, or reverse-engineer the Program in any way.
 - e Granting sublicenses, leases, or other rights in the Program to others.
 - f Making copies, or verbal or media translations of the user's guide.
 - g Making telecommunication data transmissions of the Program.

Matrox reserves the right to terminate this license without prejudice to any additional recourses Matrox may have against You if You violate any of its terms and conditions.

B. Software/Firmware limited warranty

MATROX WARRANTS TO YOU, THE ORIGINAL PURCHASER, WHO PROVIDES AN ADEQUATE PROOF OF PURCHASE, THAT THE MEDIA ON WHICH THE SOFTWARE IS RECORDED IS FREE FROM DEFECTS IN MATERIALS AND WORKMANSHIP UNDER NORMAL USE, AND THAT THE SOFTWARE WILL PERFORM SUBSTANTIALLY AS DESCRIBED IN THE RELATED DOCUMENTATION PROVIDED BY MATROX FOR A PERIOD OF NINETY (90) DAYS FROM THE DATE OF PURCHASE.

MATROX PROVIDES YOU THE PROGRAM AND RELATED DOCUMENTATION ON AN "AS IS" BASIS WITHOUT ANY WARRANTY OF ANY KIND, EITHER EXPRESSED OR IMPLIED, INCLUDING BUT NOT LIMITED TO ANY IMPLIED WARRANTY OF MERCHANTABILITY, NON-INFRINGEMENT OR FITNESS FOR A PARTICULAR PURPOSE AS WELL AS THE WARRANTY AGAINST HIDDEN OR LATENT DEFECTS, ALL OF WHICH MATROX SPECIFICALLY DISCLAIMS (AND YOU, THE ORIGINAL PURCHASER, BY ACCEPTING THE PRODUCT, SPECIFICALLY ACCEPTS SUCH DISCLAIMER AND WAIVER) TO THE MAXIMUM EXTENT PERMITTED BY LAW. THE ENTIRE RISK AS TO THE RESULTS AND PERFORMANCE OF THE PROGRAM IS ASSUMED BY YOU. SHOULD THE PROGRAM PROVE DEFECTIVE, YOU (AND NOT MATROX, ITS DISTRIBUTORS OR DEALERS) ASSUME THE ENTIRE COST OF ALL NECESSARY SERVICING, REPAIR OR CORRECTION.

MATROX DOES NOT WARRANT THAT THE OPERATION OF THE PROGRAM WILL BE UNINTERRUPTED OR ERROR-FREE, THAT DEFECTS IN THE PROGRAM WILL BE CORRECTED, OR THAT THE PROGRAM WILL MEET YOUR REQUIREMENTS OR PERFORM WITH ANY HARDWARE OR SOFTWARE PROVIDED BY THIRD PARTIES.

C. End-user registration

Before using your Matrox MicroQuad product, please take a moment to register your product in the Matrox MicroQuad Support section of our web site at www.matrox.com/video/support. The information you provide will assist Matrox to quickly diagnose and correct any problem that might arise when using the product. **Only registered end users are entitled to customer support.**

D. Hardware limited warranty

MATROX WARRANTS TO YOU, THE ORIGINAL PURCHASER, WHO PROVIDES AN ADEQUATE PROOF OF PURCHASE, THAT THE MATROX MICROQUAD HARDWARE PRODUCTS WILL BE FREE FROM FACTORY DEFECTS FOR A PERIOD OF THREE (3) YEARS FROM THE DATE OF PURCHASE. MATROX WILL REPAIR OR REPLACE, AT THE CHOICE OF MATROX, THE MATROX MICROQUAD HARDWARE PRODUCTS WHICH PROVE TO BE DEFECTIVE DURING THE WARRANTY PERIOD, PROVIDED THAT THEY ARE RETURNED TO MATROX, SUBJECT TO THE FOLLOWING LIMITATIONS:

Matrox's limited warranty covers only those defects which arise as a result of normal use of the hardware and does not apply to any:

- improper or inadequate maintenance;
- incompatibilities due to the user's hardware or software applications with or in which the Matrox product interfaces;
- product of a special or custom-made nature;
- unauthorized modification or misuse;
- improper installation, misapplication or negligence;
- operation outside the product's environmental specifications;
- improper site preparation or maintenance;
- software;
- other causes that do not relate to a product defect;
- defects or damage suffered as a result of force majeure (including theft);
- defects or damage suffered as a result of normal wear and tear, and/or
- stolen goods.

If Matrox receives from You, during the applicable warranty period notice of a defect in a warranted hardware product and the defective Matrox product in question, Matrox shall at its sole option, either repair or replace the product, and shall return the repaired product or a replacement product within a reasonable delay. The replacement product may not be new, provided that it has functionality at least equal to that of the product being replaced. This warranty is valid in any country where Matrox hardware products are distributed by Matrox or its authorized dealers.

This limited warranty statement gives You specific legal rights. You may also have other rights which vary from state to state in the United States, from province to province in Canada, and from country to country elsewhere in the world.

E. Limitations of warranty

EXCEPT FOR THE SOFTWARE/FIRMWARE LIMITED WARRANTY AND HARDWARE LIMITED WARRANTY STATEMENTS, NEITHER MATROX NOR ANY OF ITS THIRD PARTY SUPPLIERS MAKES ANY OTHER WARRANTY OF ANY KIND, WHETHER EXPRESSED OR IMPLIED, WITH RESPECT TO MATROX PRODUCTS. MATROX SPECIFICALLY DISCLAIMS (AND YOU, BY ACCEPTING THE MATROX PRODUCT, SPECIFICALLY ACCEPTS SUCH DISCLAIMER AND WAIVES) ALL OTHER WARRANTIES, EITHER EXPRESSED OR IMPLIED, INCLUDING BUT NOT LIMITED TO THE IMPLIED WARRANTIES OF MERCHANTABILITY AND FITNESS FOR A PARTICULAR OR INTENDED PURPOSE OR USE AND THE WARRANTY AGAINST LATENT

DEFECTS, WITH RESPECT TO THE HARDWARE AND/OR SOFTWARE/FIRMWARE. MATROX FURTHER DISCLAIMS ANY WARRANTY THAT MATROX PRODUCTS, IN WHOLE OR IN PART, WILL BE FREE FROM INFRINGEMENT OF ANY THIRD PARTY INTELLECTUAL PROPERTY OR PROPRIETARY RIGHTS.

TO THE EXTENT THAT THESE LIMITED WARRANTY STATEMENTS ARE INCONSISTENT WITH THE LAW OF THE LOCALITY WHERE YOU PURCHASED THE MATROX PRODUCT, THESE LIMITED WARRANTY STATEMENTS SHALL BE DEEMED MODIFIED TO BE CONSISTENT WITH SUCH LOCAL LAW. UNDER SUCH LOCAL LAW, CERTAIN LIMITATIONS OF THESE LIMITED WARRANTY STATEMENTS MAY NOT APPLY TO YOU.

TO THE EXTENT ALLOWED BY LOCAL LAW, THE REMEDIES PROVIDED IN THESE LIMITED WARRANTY STATEMENTS ARE YOUR SOLE AND EXCLUSIVE REMEDIES.

F. Limitations of liability

EXCEPT FOR THE OBLIGATIONS SPECIFICALLY SET FORTH IN THE SOFTWARE/FIRMWARE LIMITED WARRANTY AND HARDWARE LIMITED WARRANTY STATEMENTS, IN NO EVENT SHALL MATROX BE LIABLE FOR ANY DIRECT, INDIRECT, SPECIAL, INCIDENTAL, CONSEQUENTIAL, FORESEEABLE OR UNFORESEEABLE, OR PUNITIVE DAMAGES, WHETHER BASED ON CONTRACT, TORT, DELICT OR ANY OTHER LEGAL THEORY AND WHETHER ADVISED OF THE POSSIBILITY OF SUCH DAMAGES, AND/OR DAMAGES ARISING FROM THE LOSS OF USE, DATA, PRODUCTION REVENUE AND/OR PROFIT OF IN CONNECTION WITH THE MATROX PRODUCT OR ANY BUSINESS INTERRUPTION. WITHOUT PREJUDICE TO THE FOREGOING, ANY LIABILITY OF MATROX FOR ANY BREACH OF WARRANTY SHALL BE LIMITED TO THE AMOUNT PAID BY YOU FOR THE DEFECTIVE HARDWARE IN QUESTION.

TO THE EXTENT ALLOWED BY LOCAL LAW, MATROX'S ENTIRE LIABILITY AND YOUR EXCLUSIVE REMEDY SHALL BE THE REPAIR OR REPLACEMENT OF ANY DEFECTIVE PRODUCT DURING THE WARRANTY PERIOD. MATROX DOES NOT OFFER ANY OTHER WARRANTY WITH RESPECT TO MATROX HARDWARE OR SOFTWARE/FIRMWARE OR ANY OTHER HARDWARE OR SOFTWARE.

YOU SHALL BE RESPONSIBLE FOR ALL APPLICABLE TAXES, DUTIES AND CUSTOMS FEES ON ANY REPLACEMENT UNIT, AS WELL AS ALL TRANSPORT, INSURANCE, STORAGE AND OTHER CHARGES INCURRED ON ALL RETURNED PRODUCTS.

G. Indemnification disclaimer

Matrox disclaims and shall have no obligation to indemnify or defend You or any third party in respect of any actual or alleged infringement of any actual or pending patents, copyright or other intellectual property rights. Matrox shall have no liability arising out of any such actual or alleged intellectual property infringement.

MATROX SPECIFICALLY MAKES NO REPRESENTATION AND DISCLAIMS ALL EXPRESS OR IMPLIED WARRANTIES OF MERCHANTABILITY, FITNESS FOR A PARTICULAR PURPOSE AND NONINFRINGEMENT.

H. Unauthorized use

THE MATROX LICENSED SOFTWARE AND ANY DOCUMENTATION RELATED THERETO ARE NOT DESIGNED, INTENDED, OR AUTHORIZED FOR USE IN ANY TYPE OF SYSTEM OR APPLICATION IN WHICH THE FAILURE OF THE LICENSED SOFTWARE COULD CREATE A SITUATION WHERE PERSONAL INJURY OR DEATH MAY OCCUR (E.G., MEDICAL SYSTEMS, LIFE SUSTAINING, OR LIFE SAVING SYSTEMS).

Should the Licensee license or use the Matrox Licensed Software for any such unintended or unauthorized use, the Licensee shall indemnify and hold Matrox and its officers, subsidiaries and affiliates harmless against all claims, costs, damages, and expenses, and reasonable attorney fees arising out of, directly or indirectly, any claim

of product liability, personal injury or death associated with such unintended or unauthorized use, even if such claim alleges that Matrox was negligent regarding the design or manufacture of the Licensed Software.

I. Choice of Law

This Agreement shall be governed by and interpreted in accordance with the laws of the Province of Quebec, excluding any conflict of laws provisions. All disputes arising out of this Agreement shall be subject to the exclusive jurisdiction of the courts of the Province of Quebec, district of Montreal, and the parties agree and submit to the personal and exclusive jurisdiction and venue of these Courts.

J. Procedure for returning goods

No returned goods, for service or otherwise, will be accepted without prior authorization from Matrox. To obtain return authorization, contact Matrox MicroQuad Customer Support (see the contact information at www.matrox.com/video/support). Once approved, Matrox will contact You with your Returned Merchandise Authorization (RMA) number. Matrox cannot be responsible for units returned without an RMA number. Matrox will advise You of the shipping address. The packaging must indicate the RMA number on the outside. It is strongly recommended that a copy of the original packing slip which states the serial number of the items you're returning be included with the returned merchandise. This will speed up processing.

Each individual, returned unit or group of units MUST have an RMA number issued by Matrox. Matrox must authorize the number of units grouped under one RMA number. Any units received without prior approval by Matrox will be returned to You freight collect.

You shall be responsible for the cost of consolidated freight (one way only) for warranty units from your location to the location designated by Matrox. Once repaired, Matrox will incur the cost of consolidated freight for warranty units to your location.

Contents

Chapter 1

Introduction

Welcome to Matrox MicroQuad	2
Matrox MicroQuad requirements	2
Installing your Matrox MicroQuad software	2
Updating your Matrox MicroQuad firmware	3
Matrox MicroQuad Development Library	3
Last-minute information	3

Chapter 2

Connecting External Devices to Matrox MicroQuad

Available Matrox MicroQuad connections.....	6
Powering Matrox MicroQuad	6
Matrox MicroQuad operating safety feature.....	6
Matrox MicroQuad power supply and adapter plugs	6
Connecting input and output devices.....	8

Chapter 3

Using Your Matrox MicroQuad

Overview.....	10
Understanding the Matrox MicroQuad status LEDs.....	10
Matrox MicroQuad input channels	10
Matrox MicroQuad's synchronized inputs	12
HDMI output display	12
Quadrant view and full screen view	12
Selecting the audio channel pairs to output.....	12
Monitoring audio levels.....	13
Using the Matrox MicroQuad buttons	14
Setting the Matrox MicroQuad DIP switches	15
Using the Matrox MicroQuad Remote Control Panel	17
Using the Matrox MicroQuad keyboard shortcuts	20
Supported SDI input and HDMI output formats	21

Appendix A

Matrox MicroQuad Specifications

Matrox MicroQuad specifications24
 General24
 Environmental specifications25

Appendix B

Matrox Customer Support

How to get Matrox customer support28
 Registration28
 Keep up to date with our website28
 Contacting us28

Index 29

1

Introduction

This chapter lists the Matrox MicroQuad requirements and explains how to install your Matrox MicroQuad software.

Welcome to Matrox MicroQuad

Matrox MicroQuad is an SDI to HDMI multiviewer that allows you to monitor up to four SDI (3G, HD, or SD) inputs on an HDMI display. You can view each of the four SDI inputs in full screen independently or together through a quadrant view on an HDMI display. Matrox MicroQuad does not require a computer, and has three buttons on the unit for switching between full screen view and quadrant view. The Matrox MicroQuad unit has predefined DIP switches and a Mini USB port that can be used to control the Matrox MicroQuad unit remotely.

Matrox MicroQuad requirements

Matrox MicroQuad requires the following:

- An HDMI display device for viewing the SDI inputs, and a good-quality HDMI cable for connecting the HDMI display device to the HDMI output connector on the Matrox MicroQuad unit.



Caution Using a low-quality HDMI cable can damage the HDMI connector on the Matrox MicroQuad unit.

- To use the optional Matrox MicroQuad Remote Control Panel, you will need a computer with the following:
 - Microsoft Windows 7 (32-bit or 64-bit) with Service Pack 1, or Microsoft Windows XP (32-bit) with Service Pack 3.
 - A USB port and a third-party USB cable to connect Matrox MicroQuad to your computer. If your computer does not have a USB port, or if it has a different type of USB port, you can use a compatible USB adapter/cable.

Installing your Matrox MicroQuad software

Matrox MicroQuad has a Remote Control Panel that can be installed on your Windows system for controlling the Matrox MicroQuad unit remotely. To download and install the latest version of the Matrox MicroQuad software (MicroQuadUtils), visit the Downloads section of our website at www.matrox.com/video/support.

Remarks

- You must download and run Matrox MicroQuadUtils on a Windows system. Matrox MicroQuadUtils does not support Mac OS systems.
- To uninstall your Matrox MicroQuad software, choose **Start > All Programs > Matrox MicroQuadUtils > Uninstall Matrox MicroQuadUtils**.

Updating your Matrox MicroQuad firmware

When you install the Matrox MicroQuad software (MicroQuadUtils), the installation program also installs the Matrox MicroQuad Updater, which you can use to update the device's firmware or FPGA.



Note You must run the Matrox MicroQuad Updater (and MicroQuadUtils) on a Windows system. They do not work on Mac OS systems.

- 1 Power up the Matrox MicroQuad. For more information, see “[Powering Matrox MicroQuad](#)” on page 6.
- 2 Connect a third-party USB cable from Matrox MicroQuad's USB port to your computer's USB port.
- 3 Choose **Start > All Programs > Matrox MicroQuadUtils > Matrox MicroQuad Updater**.

The Matrox MicroQuad Updater opens, and indicates if an update is required.

- 4 Click **Update** to begin the firmware update.



Note If the updater shows that the MicroQuad is up-to-date, you can still force an update by selecting **Force update**, and then clicking **Update**.

The MicroQuad has been updated, and will be running the latest firmware after you reboot the device.

Matrox MicroQuad Development Library

Matrox MicroQuad provides a development library (MveTetraLibrary) that contains programming information (in *.h*, *.dll*, and *.lib* files) for Matrox MicroQuad so that you can integrate the functions of the MicroQuad interface within your own application. All the functions needed to control the Matrox MicroQuad unit are provided in MveTetraLibrary. To download the latest version of MveTetraLibrary, visit the Downloads section of our website at www.matrox.com/video/support.

Last-minute information

Any important information that wasn't available for inclusion in this manual by publication time is provided to you in the *Matrox MicroQuad Release Notes*.

Your notes

2

Connecting External Devices to Matrox MicroQuad

This chapter shows how to supply power and connect external devices to Matrox MicroQuad.

Available Matrox MicroQuad connections

Matrox MicroQuad provides the following inputs and outputs for connecting external devices:

- Four BNC SDI input connectors with up to 16 channels of embedded audio per connector.
- One HDMI output connector with up to eight channels of embedded audio.

Powering Matrox MicroQuad

You can supply power to Matrox MicroQuad using an AC outlet via the Matrox external power supply cable. To turn Matrox MicroQuad off, unplug the Matrox external power supply cable from the AC outlet.



Note For a secure power connection, use the locking connector supplied on the power supply cable to fasten it to Matrox MicroQuad.

Matrox MicroQuad operating safety feature

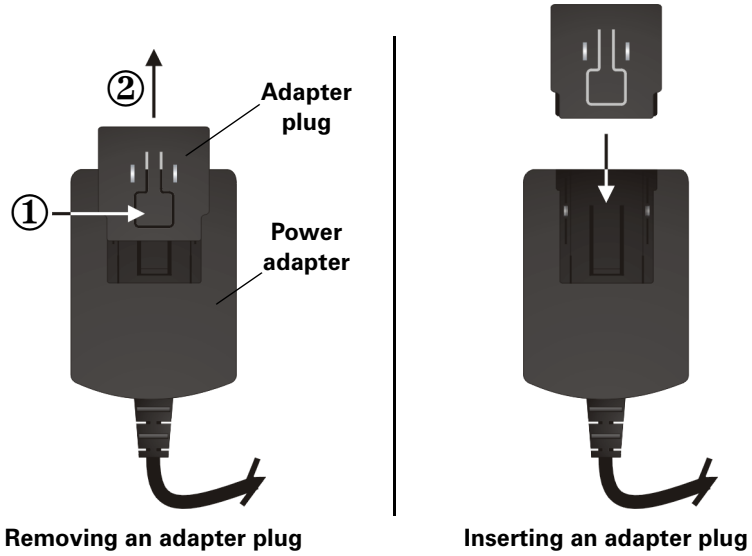
Matrox MicroQuad has an operating safety feature that will cause all four SDI LEDs to flash red as a warning when the Matrox MicroQuad unit exceeds normal operating temperature. If all four SDI LEDs flash red, unplug the external power supply cable from the AC outlet, and wait a few minutes for the Matrox MicroQuad unit to cool before reconnecting the power supply cable back into the AC outlet.

Matrox MicroQuad power supply and adapter plugs

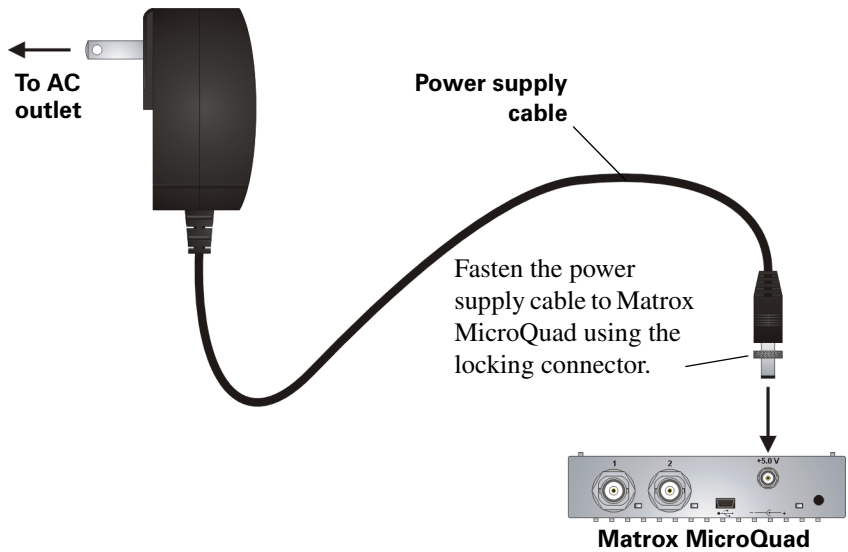
Matrox MicroQuad provides an external power supply cable with international adapter plugs for use in different regions:

- To remove an adapter plug from the power adapter, hold down the button on the adapter plug, and then slide the adapter plug up until it releases from the power adapter.
- To insert an adapter plug into the power adapter, ensure that the adapter plug is properly aligned with the corresponding slot on the power adapter, and then slide the adapter plug down into the power adapter until it locks into place.

Removing/inserting adapter plug



Powering Matrox MicroQuad



Powering Matrox MicroQuad

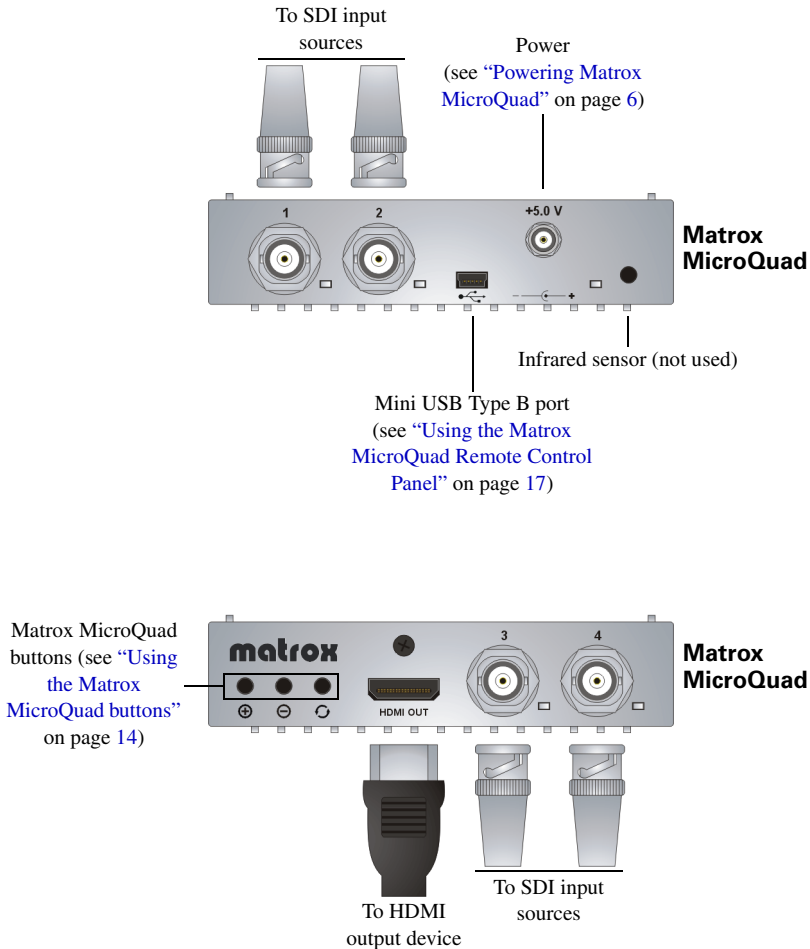
Connecting input and output devices

The Matrox MicroQuad unit supports four SDI input sources via four BNC input connectors and one HDMI output device via an HDMI output connector. For a list of the supported input and output formats, see [“Supported SDI input and HDMI output formats”](#) on page 21.



Important If you are connecting more than one input source to Matrox MicroQuad, the input sources must have the same video format.

Matrox MicroQuad connections and buttons



Caution Using a low-quality HDMI cable can damage the HDMI connector on the Matrox MicroQuad unit.

3

Using Your Matrox MicroQuad

This chapter explains how to use your Matrox MicroQuad to monitor video and audio.

Overview

Matrox MicroQuad is operated using the Matrox MicroQuad buttons located on the unit (see [“Using the Matrox MicroQuad buttons”](#) on page 14) or using the Matrox MicroQuad Remote Control Panel (see [“Using the Matrox MicroQuad Remote Control Panel”](#) on page 17). Matrox MicroQuad also features status LEDs (see [“Understanding the Matrox MicroQuad status LEDs”](#)), and DIP switches for performing various functions (see [“Setting the Matrox MicroQuad DIP switches”](#) on page 15”).

Understanding the Matrox MicroQuad status LEDs

Matrox MicroQuad features the following status LEDs:

- **SDI 1, SDI 2, SDI 3, and SDI 4**
 - **Green** The input source is connected.
 - **Red** The input source is not connected.
- **Power** The LED is green when power is supplied to Matrox MicroQuad and the hardware is functioning properly.



Note If the Matrox MicroQuad unit exceeds normal operating temperature, all four SDI LEDs will flash red as a warning. For more information see [“Matrox MicroQuad operating safety feature”](#) on page 6.

Matrox MicroQuad input channels

Matrox MicroQuad supports four input channels that correspond to the SDI input connectors (SDI 1 to SDI 4). The SDI input connector number and the input channel number correspond. For example, SDI input connector 1 (SDI 1) corresponds to input channel 1 and SDI input connector 4 (SDI 4) corresponds to input channel 4. If DIP switch 2 is OFF on the Matrox MicroQuad unit (see [“Setting the Matrox MicroQuad DIP switches”](#) on page 15) or **Hide HDMI labels** in the **DIP Switch Settings** of the Matrox MicroQuad Remote Control Panel is not selected (see [“Using the Matrox MicroQuad Remote Control Panel”](#) on page 17), the HDMI labels that appear on the HDMI output will correspond to the input channel numbers. In the following examples, SDI input connector 1 (SDI 1) corresponds to CAM 1 (input channel 1) and SDI input connector 4 (SDI 4) corresponds to CAM 4 (input channel 4).

You can also show the VU meters for each input channel. For more information on VU meters, see [“Monitoring audio levels”](#) on page 13.

Matrox MicroQuad quadrant view



Note If the resolution and frame rate on all SDI input sources do not match, only SDI input channel 1 (SDI 1) will be displayed while the other channels will appear black.

Matrox MicroQuad full screen view



Matrox MicroQuad's synchronized inputs

Matrox MicroQuad synchronizes the video and audio on the HDMI output to SDI input channel 1 (SDI 1). This ensures that when the HDMI display is in quadrant view, all four video outputs are synchronized, thereby eliminating artifacts and video tearing.



Note If nothing is connected to SDI input channel 1 (SDI 1), then Matrox MicroQuad automatically synchronizes the HDMI output to the next available valid SDI input channel.

HDMI output display

Matrox MicroQuad outputs the video and audio from the SDI inputs to an HDMI display device. The video output can be displayed either in quadrant view or in full screen view, and you can select the audio channel pairs to be output.

Quadrant view and full screen view

Matrox MicroQuad allows you to monitor up to four SDI input sources at the same time in quadrant view (see figure “[Matrox MicroQuad quadrant view](#)” on page 11), or view a selected SDI input source in full screen view on the HDMI display device (see figure “[Matrox MicroQuad full screen view](#)” on page 11).

The quadrant view is the default view when you first supply power to Matrox MicroQuad. A red selection box can be used in quadrant view to indicate which video input will be viewed in full screen view when selected. You can show or hide the red selection box using the DIP switch settings on the Matrox MicroQuad unit (see “[Setting the Matrox MicroQuad DIP switches](#)” on page 15) or the Matrox MicroQuad Remote Control Panel (see “[Using the Matrox MicroQuad Remote Control Panel](#)” on page 17).

To switch from quadrant view to full screen view, to move from one input source to the next, or to select a video input to view in full screen, see “[Using the Matrox MicroQuad buttons](#)” on page 14 or “[Using the Matrox MicroQuad Remote Control Panel](#)” on page 17.

Selecting the audio channel pairs to output

Matrox MicroQuad allows you to select up to four audio channel pairs (from audio channels 1 to 8) to output to the HDMI display device. To do this, you must use the Matrox MicroQuad Remote Control Panel (see “[Using the Matrox MicroQuad Remote Control Panel](#)” on page 17). If you do not indicate which audio pairs to output, audio channels 1 to 8 will be output by default. Audio is output for the currently selected input source, or you can lock the audio output to input channel 1 (SDI 1) using the DIP switches (see “[Setting the Matrox MicroQuad DIP switches](#)” on page 15) or using the Matrox MicroQuad Remote

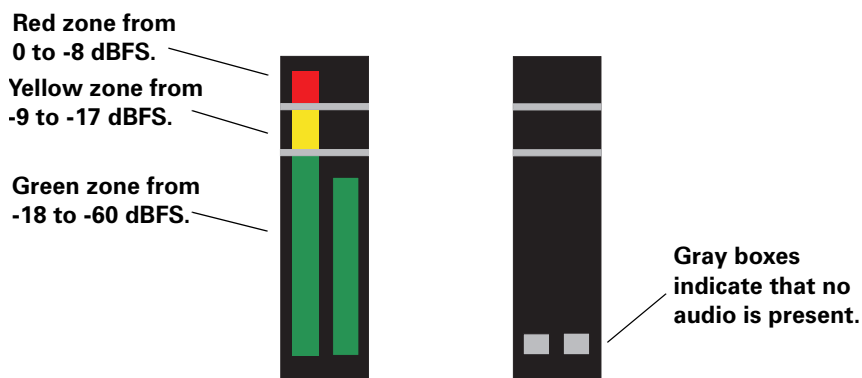
Control Panel (see [“Using the Matrox MicroQuad Remote Control Panel”](#) on page 17).

Monitoring audio levels

You can monitor the audio levels of your input sources through VU meters by setting the DIP switch setting accordingly on the Matrox MicroQuad unit (see [“Setting the Matrox MicroQuad DIP switches”](#) on page 15) or in the Matrox MicroQuad Remote Control Panel (see [“Using the Matrox MicroQuad Remote Control Panel”](#) on page 17).

Vertical colored bars indicate the input level. As the audio source is played, the color of the input level is green at or below -18 dBFS, yellow between -17 to -9 dBFS, and red above -8 dBFS. Gray boxes indicate that no audio is present. If needed, adjust the audio level on your input source device to keep the average input level between -60 and -18 dBFS. To select the audio input pair that you would like to monitor, see [“Using the Matrox MicroQuad Remote Control Panel”](#) on page 17. By default, input pair 1-2 will be displayed on the VU meters.




Matrox MicroQuad VU meters



Note In quadrant view, audio is output only for the currently selected input source. However, the VU meters will display the audio levels for each of your input sources.

Using the Matrox MicroQuad buttons

The Matrox MicroQuad buttons are used to switch from quadrant view to full screen view and to cycle through the input sources on the HDMI display of Matrox MicroQuad.

-  and  (Cycle buttons) Use these buttons to move from one input source to the next when in quadrant view, or to cycle through the different video inputs when in full screen view.
-  (Select button) Use this button to select the video input to view in full screen view when in quadrant view, or to toggle between full screen view and quadrant view.

Instead of using the Matrox MicroQuad buttons, you can use the Matrox MicroQuad Remote Control Panel to switch from quadrant view to full screen view and to cycle through the input sources on the HDMI display (see [“Using the Matrox MicroQuad Remote Control Panel”](#) on page 17).

Remarks

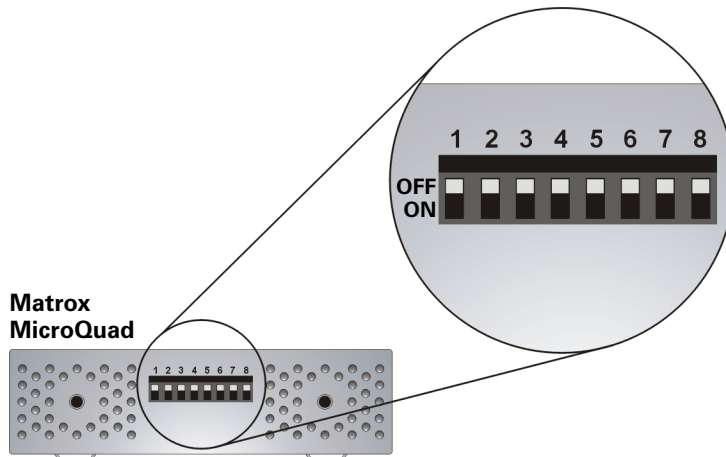
- You can lock the Matrox MicroQuad buttons by setting DIP switch 1 accordingly on the Matrox MicroQuad unit (see [“Setting the Matrox MicroQuad DIP switches”](#) on page 15).
- If the resolution and frame rate on all SDI input sources do not match, only SDI input channel 1 (SDI 1) will be displayed while the other channels will appear black.
- Switching between quadrant view and full screen view, or switching from one input source to another is done without signal interruption.
- If you want to select the audio channels for the VU meters and HDMI output, you must use the Matrox MicroQuad Remote Control Panel (see [“Using the Matrox MicroQuad Remote Control Panel”](#) on page 17).

Setting the Matrox MicroQuad DIP switches

Matrox MicroQuad features DIP switches on the side of the unit for locking the Matrox MicroQuad buttons, hiding the HDMI labels, hiding the red selection box, hiding the VU meters, locking the audio to input channel 1 (SDI 1), and for indicating whether or not your video inputs are PsF. A DIP switch is ON when the switch is down, and OFF when it is up.

Instead of using the DIP switches, you can set some of the DIP switch actions using the Matrox MicroQuad Remote Control Panel (see [“Using the Matrox MicroQuad Remote Control Panel”](#) on page 17).

Matrox MicroQuad DIP switches



- **DIP switch 1** When ON, the Matrox MicroQuad buttons are locked and will not function.
- **DIP switch 2** When ON, the HDMI labels are hidden. When OFF, the HDMI labels are visible in order to identify the video input channel in quadrant view (see figure [“Matrox MicroQuad quadrant view”](#) on page 11) and full screen view (see figure [“Matrox MicroQuad full screen view”](#) on page 11).
- **DIP switch 3** When ON, the red selection box is hidden. When OFF, the red selection box is visible in quadrant view to indicate which video input will be viewed in full screen view (see figure [“Matrox MicroQuad quadrant view”](#) on page 11).



Note If the red selection box is hidden, you can still select which video input to view in full screen view.

- **DIP switch 4** When ON, the VU meters are hidden. When OFF, the VU meters are displayed to allow you to monitor the audio levels of your input sources. For more information on monitoring the audio levels, see [“Monitoring audio levels”](#) on page 13.
- **DIP switch 5** When ON, the audio output to the HDMI display device is locked to input channel 1 (SDI 1). Even if locked, the audio channels selected will be output, but the audio will correspond to input channel 1. When OFF, the audio corresponds to the currently selected input source in quadrant or full screen view.

Remarks

- If nothing is connected to SDI input channel 1 (SDI 1) when DIP switch 5 is ON, then no audio is output to the HDMI display device.
- If you lock the audio to input channel 1 (SDI 1), but you do not indicate which audio pairs to output using the Matrox MicroQuad Remote Control Panel (see [“Using the Matrox MicroQuad Remote Control Panel”](#) on page 17), audio channels 1 to 8 are output by default.
- **DIP switch 6** Turn the switch ON when your video inputs are PsF. Turn it OFF when your video inputs are progressive or interlaced.
- **DIP switches 7 and 8** Not used.

Using the Matrox MicroQuad Remote Control Panel

Matrox MicroQuad has an optional Remote Control Panel for controlling the Matrox MicroQuad unit remotely. To install the Matrox MicroQuad Remote Control Panel, see [“Installing your Matrox MicroQuad software”](#) on page 2. The Matrox MicroQuad Remote Control Panel is accessed through the Mini USB Type B port on the Matrox MicroQuad unit, and lets you control many functions on the Matrox MicroQuad unit, such as to switch from quadrant view to full screen view, select the audio channels for the VU meters and HDMI output, and lock the audio to input channel 1 (SDI 1).

Instead of using the Matrox MicroQuad Remote Control Panel to perform certain functions, you can use the Matrox MicroQuad buttons and the DIP switches on the Matrox MicroQuad unit (see [“Using the Matrox MicroQuad buttons”](#) on page 14 and [“Setting the Matrox MicroQuad DIP switches”](#) on page 15).



Note To indicate whether or not your video input sources are PsF, you must use the DIP switches on the Matrox MicroQuad unit (see [“Setting the Matrox MicroQuad DIP switches”](#) on page 15).



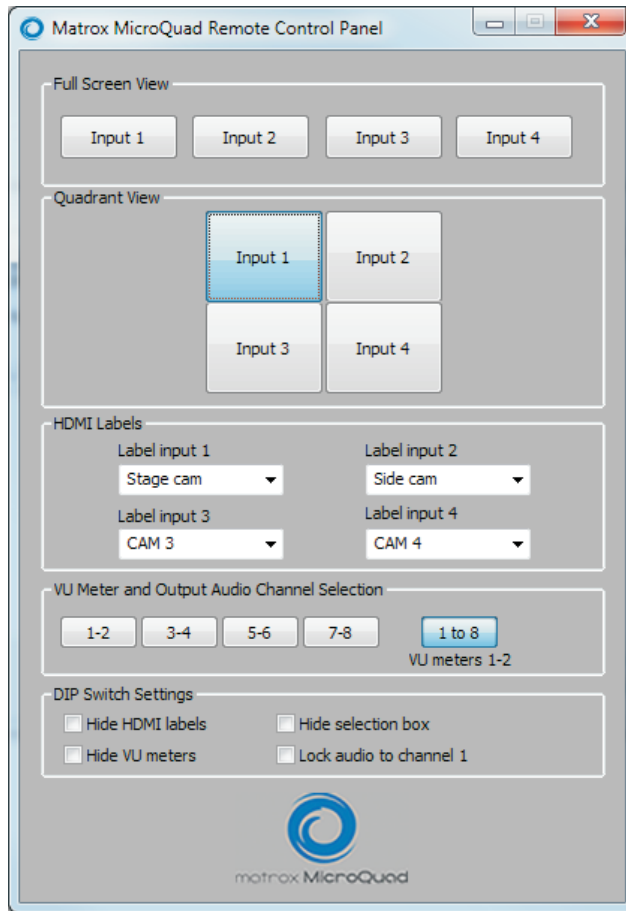
To use the Matrox MicroQuad Remote Control Panel:

- 1 Make sure that power is supplied to the Matrox MicroQuad unit (see [“Powering Matrox MicroQuad”](#) on page 6), and that you have an HDMI output display device and at least one SDI input source connected to the Matrox MicroQuad unit (see [“Connecting input and output devices”](#) on page 8).
- 2 Connect a third-party USB cable from Matrox MicroQuad’s USB port to your computer’s USB port.



Note If your computer does not have a USB port, or if it has a different type of USB port, you can use a compatible USB adapter/cable.

The Matrox MicroQuad Remote Control Panel appears on your computer monitor.



Note When you first access the Matrox MicroQuad Remote Control Panel, the DIP switch settings on the Matrox MicroQuad unit for hiding the HDMI labels, hiding the red selection box, hiding the VU meters, and locking the audio to input channel 1 (DIP switches 2, 3, 4, and 5, respectively) are reflected in the Matrox MicroQuad Remote Control Panel. (For more information on DIP switches, see [“Setting the Matrox MicroQuad DIP switches”](#) on page 15.) If you change these settings in the Matrox MicroQuad Remote Control Panel, these settings will override the DIP switch settings. To reset the DIP switch settings on the Matrox MicroQuad unit to reflect their actual settings, unplug and reconnect the power cable (see [“Powering Matrox MicroQuad”](#) on page 6).

- 3** Under **Full Screen View** or **Quadrant View**, click **Input 1**, **Input 2**, **Input 3**, or **Input 4** to display an input source in full screen view, or select an input source in quadrant view on your HDMI output display device. For information on full screen view and quadrant view, see [“HDMI output display”](#) on page 12.

Alternatively, you can select an input source in full screen or quadrant view using keyboard shortcuts (see [“Using the Matrox MicroQuad keyboard shortcuts”](#) on page 20) or the Matrox MicroQuad buttons (see [“Using the Matrox MicroQuad buttons”](#) on page 14).

Remarks

- If the resolution and frame rate on all SDI input sources do not match, only SDI input channel 1 (SDI 1) will be displayed while the other channels will appear black.
 - Switching between quadrant view and full screen view, or switching from one input source to another is done without signal interruption.
- 4** Under **HDMI Labels**, you can customize the labels that appear on the HDMI display device. Enter or select the HDMI label that you would like for each input in the **Label input 1**, **Label input 2**, **Label input 3**, and/or **Label input 4** boxes. The Matrox MicroQuad Remote Control Panel will retain the last five HDMI labels that were entered so that you can re-use your most common labels.

Remarks

- The HDMI labels are limited to ten characters.
 - If you disconnect the USB cable from the Matrox MicroQuad unit, the unit will display the current HDMI labels.
- 5** Under **VU Meter and Output Audio Channel Selection**, select the audio input channels that you would like to monitor on the VU meters and output to the HDMI display device. If you select **1-2**, **3-4**, **5-6**, or **7-8**, the selected audio input pair will be displayed on the VU meters and output to the HDMI display device. If you select **1 to 8**, audio input channels 1 to 8 will be output to the HDMI display device and only audio input pair 1-2 will be displayed on the VU meters. For more information about monitoring audio levels, see [“Monitoring audio levels”](#) on page 13.



Note If you do not indicate which audio pairs to output, audio input channels 1 to 8 will be output by default and audio input pair 1-2 will be displayed on the VU meters.

6 Under **DIP Switch Settings**, select:

- **Hide HDMI labels** if you do not want to display the HDMI labels of the input sources on the HDMI output display device.
- **Hide selection box** if you do not want the red selection box to appear when viewing the input sources in quadrant view on the HDMI output display device.
- **Hide VU meters** if you do not want to display the VU meters of the input sources on the HDMI output display device.
- **Lock audio to channel 1** to lock the audio output to the HDMI display device to input channel 1 (SDI 1).



Note If nothing is connected to SDI input channel 1 when you select **Lock audio to channel 1**, then no audio will be output.

Using the Matrox MicroQuad keyboard shortcuts

The Matrox MicroQuad Remote Control Panel allows you to use keyboard shortcuts to display an input source in full screen view or select an input source in quadrant view on your HDMI output display device.

Keyboard shortcuts	
Full screen view	
Input 1	CTRL+SHIFT+1
Input 2	CTRL+SHIFT+2
Input 3	CTRL+SHIFT+3
Input 4	CTRL+SHIFT+4
Quadrant view	
Input 1	CTRL+SHIFT+5
Input 2	CTRL+SHIFT+6
Input 3	CTRL+SHIFT+7
Input 4	CTRL+SHIFT+8

Supported SDI input and HDMI output formats

The HDMI output format corresponds to the SDI input format. For example, if the input format is 1920×1080p at 60 fps, the output format will also be 1920×1080p at 60 fps.



Important If you are connecting more than one input source to Matrox MicroQuad, the input sources must have the same video format.

Matrox MicroQuad supports the following SDI input and HDMI output video formats:

- NTSC
- PAL
- 1280×720p at 50, 59.94, and 60 fps
- 1920×1080i at 50, 59.94, and 60 fps
- 1920×1080PsF at 23.98, 24, 25, 29.97, and 30 fps
- 1920×1080p at 23.98, 24, 25, 29.97, 30, 50, 59.94, and 60 fps

Remarks

- Make sure that your HDMI monitor supports the SDI input format that you are using. Otherwise, your HDMI monitor will not display an output.
- When using PsF video input formats, DIP switch 6 must be in the ON position (see “[Setting the Matrox MicroQuad DIP switches](#)” on page 15).
- Dual-link input is only supported on 3G Level B as a single SDI connector. Two SDI connectors cannot be used to create a dual-link input.
- 4:4:4 video input signals are not supported.

Your notes

A

Matrox MicroQuad Specifications

This appendix provides specifications for Matrox MicroQuad.

Matrox MicroQuad specifications

General

- **Video formats** NTSC, PAL, 720p, 1080p/i/PsF
- **Regulatory compliance**
 - FCC Class B, CE Mark Class B, ACMA Class B
 - RoHS Directive 2002/95/EC
- **Dimensions**
 - Length 125 mm (4.92 in)
 - Width 118 mm (4.65 in)
 - Height 26 mm (1.02 in)
 - Weight 220 g (7 ¾ oz)
- **External AC/DC adapter**
 - Input: 100-240 VAC 50-60 Hz
 - Output: +5V DC, 3A max
 - Dimensions: L 78 mm × W 46 mm × H 36 mm (3.1 in × 1.8 in × 1.4 in)
- **Total power consumption** 12 watts

Video

- **SDI input**
 - Compliant with SMPTE 259M/292M/424M
 - SDI support of YUV 4:2:2 8-bit/10-bit
 - Automatic detection of input signal
 - 16 channels of embedded audio
 - Four BNC SDI connectors (75 Ω), terminated
 - Belden 1694a cable length supported:
 - 350 m (1148 ft) for SD
 - 150 m (492 ft) for HD
 - 50 m (164 ft) for 3G
- **HDMI output**
 - HDMI support of YUV 4:2:2
 - Eight channels of embedded audio
 - Standard Type A HDMI connector (19 pins)

Environmental specifications

- Minimum/maximum operating temperature: 0 to 40° C
- Minimum/maximum storage temperature: -40 to 75° C
- Maximum altitude for operation: 3,000 meters
- Maximum altitude for transport: 12,000 meters
- Operating humidity: 20 to 80% relative humidity (non-condensing)
- Storage humidity: 5 to 95% relative humidity (non-condensing)

Your notes

B

Matrox Customer Support

This appendix explains how you can register your Matrox MicroQuad and obtain customer support.

How to get Matrox customer support

If you have a problem that you're unable to solve by referring to the documentation for your Matrox product, please contact your Matrox representative. He or she should be able to help you quickly correct any installation or system configuration problem.

If your representative is unable to solve your problem, contact Matrox for further information and assistance.

Registration

You can register your Matrox product in the Matrox Support section of our website at www.matrox.com/video/support.

Only registered users are entitled to customer support, software updates, special promotional offers, and access to our user forum.

Keep up to date with our website

In addition to registering your Matrox product, our website offers you up-to-the-minute information about Matrox products and software updates. Be sure to place our site in your favorites or bookmarks:

www.matrox.com/video/support.

Contacting us

Matrox is proud to offer worldwide customer support. Please use the contact information for your Matrox product and area as provided on our website at www.matrox.com/video/support.

A

- AC power to Matrox MicroQuad 6
- Adapter plug connection 6
- Audio channel pair selection 12, 19
- Audio levels, monitoring 13, 19

B

- BNC input connectors 8
- Buttons on Matrox MicroQuad 14

C

- Connections
 - AC power to Matrox MicroQuad 6
 - available on Matrox MicroQuad 6
 - input sources 8
 - output device 8
- Customer support 28

D

- Development library 3
- DIP switches on Matrox MicroQuad 15
 - hiding HDMI labels 15
 - hiding the red selection box 15
 - hiding VU meters 16
 - indicating PsF video input 16
 - locking audio input channel 16
 - locking buttons 15
- Displaying input in quadrant view 12, 19
- Displaying source in full screen view 12, 19

E

- Environmental specifications 25

F

- Firmware, updating 3
- Full screen view
 - displaying 12, 19
 - keyboard shortcuts 20
 - using the Matrox MicroQuad buttons 14

H

- HDMI output
 - connection 8
 - displaying 12
 - labels 10, 19

- specifications 24
- synchronizing audio and video 12

Hiding

- HDMI labels 15, 20
- red selection box 15, 20
- VU meters 16, 20

I

- Indicating PsF video input 16
- Inputs on Matrox MicroQuad
 - BNC 8
 - SDI 8
 - supported video formats 21
- Internet site, Matrox 28

L

- LEDs on Matrox MicroQuad 10
- License agreement i
- Locking the Matrox MicroQuad audio input channel 16, 20
- Locking the Matrox MicroQuad buttons 15

M

- Matrox
 - contacting us 28
 - WWW site 28
- Matrox MicroQuad
 - AC power connection 6
 - AC/DC adapter specifications 24
 - adapter plug connection 6
 - audio channel pair selection 12, 19
 - available connections 6
 - buttons 14
 - development library 3
 - dimensions 24
 - DIP switches 15
 - displaying HDMI output 12
 - displaying input in quadrant view 12, 19
 - displaying source in full screen view 12, 19
 - environmental specifications 25
 - features 2
 - flashing SDI LEDs 6
 - hiding HDMI labels 15, 20
 - hiding the red selection box 15, 20
 - hiding VU meters 16, 20

- indicating PsF video input 16
- input channels 10
- installing software for 2
- labelling HDMI output 19
- LEDs 10
- locking audio input channel 16, 20
- locking buttons 15
- monitoring audio levels 13
- operating safety feature 6
- power supply 6
- regulatory compliance 24
- Remote Control Panel
 - audio channel pair selection 19
 - DIP switch settings 18, 20
 - displaying input in quadrant view 19
 - displaying source in full screen view 19
 - installing 2
 - keyboard shortcuts 20
 - labelling HDMI output 19
 - locking audio input channel 20
 - user interface 18
 - using 17
- requirements 2
- specifications 24
- supported video input and output formats 21
- synchronizing audio and video 12
- updating firmware for 3
- Matrox MicroQuad Updater, using 3
- Matrox MicroQuadUtils, installing 2
- MicroQuad
 - See* Matrox MicroQuad
- MveTetraLibrary 3

O

- Operating safety feature of Matrox MicroQuad 6
- Output on Matrox MicroQuad
 - audio channel pair selection 12, 19
 - HDMI connection 8
 - HDMI display 12
 - supported video formats 21

P

- Power, connecting
 - adapter plugs 6
 - to Matrox MicroQuad 6

- PsF video input, indicating 16

Q

- Quadrant view
 - displaying 12, 19
 - keyboard shortcuts 20
 - using the Matrox MicroQuad buttons 14

R

- Registering your Matrox product 28
- Regulatory compliance 24
- Remote Control Panel
 - audio channel pair selection 19
 - DIP switch settings 18, 20
 - displaying input in quadrant view 19
 - displaying source in full screen view 19
 - installing 2
 - keyboard shortcuts 20
 - labelling HDMI output 19
 - user interface 18
 - using 17
- Returning procedure iv

S

- Safety feature when operating Matrox MicroQuad 6
- SDI input
 - channels 10
 - connections 8
 - specifications 24
- Service, returns iv
- Software, installing 2
- Specifications
 - AC/DC adapter 24
 - environmental 25
 - HDMI output 24
 - Matrox MicroQuad 24
 - SDI input 24

Supported video input and output formats [21](#)
Synchronizing audio and video on HDMI output [12](#)
System requirements [2](#)

T

Technical support [28](#)

U

Updating firmware [3](#)

V

Video input and output formats supported [21](#)
VU meters for monitoring audio levels [13](#), [19](#)

W

Warranty [i](#)
WWW site, Matrox [28](#)

Your notes

Compliance Statements



USA

FCC Compliance Statement

Remark for the Matrox hardware products supported by this guide These devices have been tested and found to comply with the limits for a Class B digital device, pursuant to Part 15 of the FCC Rules. These limits are designed to provide reasonable protection against harmful interference in a residential installation. This equipment generates, uses and can radiate radio frequency energy and, if not installed and used in accordance with the instructions, may cause harmful interference to radio communications. However, there is no guarantee that interference will not occur in a particular installation. If this equipment causes harmful interference to radio or television reception, which can be determined by turning the equipment off and on, the user is encouraged to try to correct the interference by one or more of the following measures: • Reorient or relocate the receiving antenna • Increase the separation between the equipment and receiver • Connect the equipment into an outlet on a circuit different from that to which the receiver is connected • Consult the dealer or an experienced radio/TV technician for help.

WARNING Changes or modifications to this unit not expressly approved by the party responsible for the compliance could void the user's authority to operate this equipment. The use of shielded cables for connection of equipment and other peripherals to the card is required to meet FCC requirements.

Declaration of conformity of a Class B digital device according to the FCC rules

We, the Responsible Party Matrox, 625 State Route 3, Unit B, Plattsburgh, NY 12901-6530 • Telephone: (514) 822-6000 (ext. 2026) • Attention: Conformity Group

Declaration The Matrox hardware products supported by this guide comply with Part 15 of the FCC Rules. Operation is subject to the following two conditions: (1) these devices may not cause harmful interference, and (2) these devices must accept any interference received, including interference that may cause undesired operation. Any question regarding this declaration should be forwarded to the above coordinates.

Canada

(English) Industry Canada Compliance Statement

CAN ICES-3 (B)/NMB-3 (B)

Remark for the Matrox hardware products supported by this guide These digital devices do not exceed the Class B limits for radio noise emission from digital apparatus devices set out in the Radio Interference Regulation of Industry Canada.

(Français) Conformité avec les exigences du ministère de l'Industrie Canada

CAN ICES-3 (B)/NMB-3 (B)

Remarque sur les produits matériels Matrox couverts par ce guide Ces appareils numériques n'émettent aucun bruit radioélectrique dépassant les limites applicables aux appareils numériques de Classe B prescrites dans le Règlement sur le brouillage radioélectrique édicté par Industrie Canada.

Japan

VCCI Compliance Statement

Remark for the Matrox hardware products supported by this guide These are Class B products based on the standard of the Voluntary Control Council for Interference from Information Technology Equipment (VCCI). If these are used near a radio or television receiver in a domestic environment, they may cause radio interference. Install and use the equipment according to instructions in the manual.

この装置は、情報処理装置等電波障害自主規制協議会（VCCI）の基準に基づくクラスB情報技術装置です。この装置は、家庭環境で使用することを目的としていますが、この装置がラジオやテレビジョン受信機に近接して使用されると、受信障害を引き起こすことがあります。

取扱説明書に従って正しい取り扱いをして下さい。



Europe

(English) European user's information – Declaration of Conformity

Remark for the Matrox hardware products supported by this guide These devices comply with EC Directive 2006/95/EC for a Class B digital device. They have been tested and found to comply with EN55022/CISPR22 and EN55024/CISPR24. In a domestic environment these products may cause radio interference in which case the user may be required to take adequate measures. To meet EC requirements, shielded cables must be used to connect equipment and other peripherals to the card. These products have been tested in a typical class B compliant host system. It is assumed that these products will also achieve compliance in any class B compliant system.

(Français) Informations aux utilisateurs Européens – Déclaration de conformité

Remarque sur les produits matériels Matrox couverts par ce guide Ces unités sont conformes à la directive communautaire 2006/95/EC pour les unités numériques de classe B. Les tests effectués ont prouvé qu'elles sont conformes aux normes EN55022/CISPR22 et EN55024/CISPR24. Le fonctionnement de ces produits dans un environnement résidentiel peut causer des interférences radio, dans ce cas l'utilisateur peut être amené à prendre les mesures appropriées. Pour respecter les impératifs communautaires, les câbles de connexion entre l'équipement ou autres périphériques et la carte doivent être blindés. Ces produits ont été testés dans un système hôte typique compatible classe B. On suppose qu'ils présenteront la même compatibilité dans tout système compatible classe B.

(Deutsch) Information für europäische Anwender – Konformitätserklärung

Anmerkung für die Matrox Hardware-Produktunterstützung durch dieses Handbuch Diese Geräte entsprechen EC Direktive 2006/95/EC für ein digitales Gerät Klasse B. Sie wurden getestet und entsprechen demnach EN55022/CISPR22 und EN55024/CISPR24. In einer Wohnungsbau können diese Produkte Funkinterferenzen erzeugen, und der Benutzer kann genötigt sein, entsprechende Maßnahmen zu ergreifen. Um EG-Anforderungen zu entsprechen, müssen zum Anschließen des ausrüstung und anderer Peripheriegeräte an die Karte abgeschirmte Kabel verwendet werden. Diese Produkt wurden in einem typischen, der Klasse B entsprechenden, Host-System getestet. Es wird davon ausgegangen, daß diese Produkte auch in jedem Klasse B entsprechenden System entsprechend funktionieren.

(Italiano) Informazioni per gli utenti europei – Dichiarazione di conformità

Nota per i prodotti hardware Matrox supportati da questa guida Questi dispositivi sono conformi alla direttiva CEE 2006/95/EC relativamente ai dispositivi digitali di Classe B. Sono stati provati e sono risultati conformi alle norme EN55022/CISPR22 e EN55024/CISPR24. In un ambiente domestico, questi prodotti possono causare radiointerferenze, nel qual caso all'utente potrebbe venire richiesto di prendere le misure adeguate. Per soddisfare i requisiti CEE, l'apparecchiatura e le altre periferiche vanno collegati alla scheda grafica con cavi schermati. Questi prodotti sono stati provati in un tipico sistema host conforme alla classe B. Inoltre, si dà per scontato che questi prodotti acquisiranno la conformità in qualsiasi sistema conforme alla classe B.

(Español) Información para usuarios europeos – Declaración de conformidad

Observación referente a los productos de hardware de Matrox apoyados por este manual Estos dispositivos cumplen con la directiva de la CE 2006/95/EC para dispositivos digitales de Clase B. Dichos dispositivos han sido sometidos a prueba y se ha comprobado que cumplen con las normas EN55022/CISPR22 y EN55024/CISPR24. En entornos residenciales, estos productos pueden causar interferencias en las comunicaciones por radio; en tal caso el usuario deberá adoptar las medidas adecuadas. Para satisfacer las disposiciones de la CE, deberán utilizarse cables apantallados para conectar el equipo y demás periféricos a la tarjeta. Estos productos han sido sometidos a prueba en un típico sistema anfitrión que responde a los requisitos de la clase B. Se supone que estos productos cumplirán también con las normas en cualquier sistema que responda a los requisitos de la clase B.





www.matrox.com/video